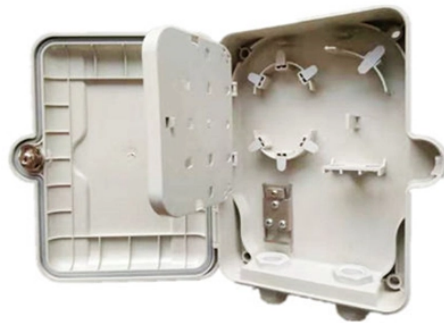


# **12-core optical fiber terminal box single mode**



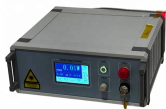
## 12-core optical fiber terminal box single mode



Fiberhome's 12-Port SC Single-mode Wall-mounted Optical Fiber Terminal Box is engineered to provide safe and organized termination for indoor fiber optic installations. Featuring a strong metal shell and ...



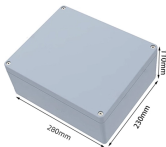
This 12-core FC single-mode optical end box is ideal for residential, commercial, and enterprise FTTH and LAN applications, offering excellent protection and organized fiber connectivity.



After an optical cable arrives at the user's end, it is fixed in the terminal box. Then, the optical cable core and pigtail are welded in the terminal box. These boxes are similar to MDF in telephone exchanges. ...



About this item □IP65 Waterproof□The optical fiber connector box is made of PC+ABS material, waterproof, anti-aging, dust-proof, can be used outdoors and indoors. □Application□The fiber optic ...



This box comes with one cable inlet and 12 output port, supporting up to 12-core splice. It is made of engineering plastic that provides mechanical protection for fiber splice and joint; the screw lock ...



The 12 Port Fiber Distribution Box can connect up to 2 optical cables, providing space for distributors and 12 fuses. It is equipped with 12 SC adapters and can work in outdoor environments.



It provides secure splicing, distribution, and protection for up to 12 optical fiber cores, making it ideal for telecom rooms, offices, and residential installations. Built from flame-retardant ...



CommScope wall boxes offer efficient fiber connectivity. Easy installation, versatile sizes, and superior cable management.



With a maximum capacity of 12 cores and the ability to accommodate 3 pieces of 8-13mm cables, it provides ample space for your connectivity needs. What sets it apart is the innovative design that ...



The GP-T404-12F is a compact fiber optic floor terminal box for FTTH in MDUs, supporting 12 fiber splices and cable transitions for riser and horizontal setups.

## Contact Us

For more information, pricing, or custom energy solutions, please contact us:

Website: <https://gdroofing.co.za>

Email: [sales@gdroofing.co.za](mailto:sales@gdroofing.co.za)

Phone: +27 72 418 9365

Address: 22 Electron Avenue, Isando, Johannesburg, 1600, South Africa

This document is for informational purposes only. Specifications subject to change without notice.

