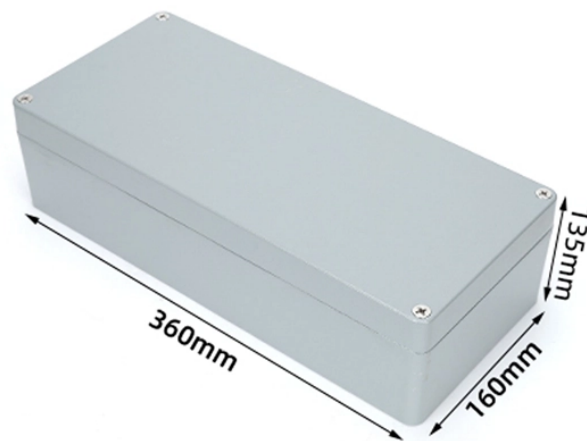


# 1224r switch not communicating with S5560

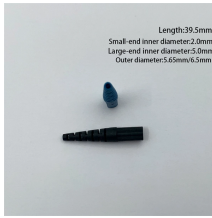


## Overview

Troubleshooting flowchart Figure 11 Troubleshooting fiber port's failure to come up Solution To resolve the problem: Verify that the speed and duplex mode of the local port match the speed and duplex mode of the peer port: Execute the display interface brief command to examine whether.

Troubleshooting flowchart Figure 11 Troubleshooting fiber port's failure to come up Solution To resolve the problem: Verify that the speed and duplex mode of the local port match the speed and duplex mode of the peer port: Execute the display interface brief command to examine whether. This document provides information about troubleshooting common software and hardware issues with S5560-HI Switch Series. This document is not restricted to specific software or hardware versions. General guidelines IMPORTANT: To prevent a failure from causing loss of configuration. No part of this manual may be reproduced or transmitted in any form or by any means without prior written consent of Hangzhou H3C Technologies Co. (Refer to the next two sections for instructions. com Document version: 6W101-20160520. Page 3 Preface This installation guide describes the appearance.

## 1224r switch not communicating with S5560



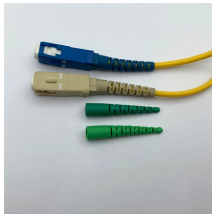
Computers & electronics Networking Network switches H3C S5560-EI series Troubleshooting guide



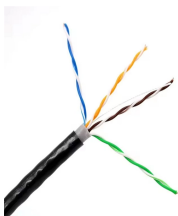
1. Connect the switch to your PC using any of the 24 Ethernet ports on the front of the unit. 2. Set your PC to a fixed IP address of 10.10.10.2. If you cannot change ...



Installation guide • Read online or download PDF • H3C Technologies H3C S5560 Series Switches User Manual



The S5560-32C-HI switch comes with power module slot 1 (PWR1) empty and power module slot 2 (PWR2) installed with a filler panel. You can install one or two ...



This section describes how to troubleshoot unexpected switch reboot, power module failure, and fan tray failure. To troubleshoot ports, see "Troubleshooting ports."



Introduction This Technical Support Note shows how to configure the NetVanta 1224R/STR for an Internet connection using an ethernet port. In this scenario, you will usually have a separate cable or ...



Do not power on the switch when it does not have

- fan trays or has only one fan tray installed. Make sure slots are installed with fan trays or blank filler panels for the device to operate.



Introduction This document provides information about troubleshooting common software and hardware issues with S5560-HI Switch Series. This document is not restricted to specific software or hardware ...



NOTE: This section describes how to troubleshoot unexpected switch reboot, power module failure, and fan tray failure. To troubleshoot ports, see "Troubleshooting ...



Manuals and User Guides for ADTRAN NetVanta 1224R. We have 7 ADTRAN NetVanta 1224R manuals available for free PDF download: Hardware Installation Manual, Support Note, ...

## Contact Us

For more information, pricing, or custom energy solutions, please contact us:

Website: <https://gdroofing.co.za>

Email: [sales@gdroofing.co.za](mailto:sales@gdroofing.co.za)

Phone: +27 72 418 9365

Address: 22 Electron Avenue, Isando, Johannesburg, 1600, South Africa

This document is for informational purposes only. Specifications subject to change without notice.

