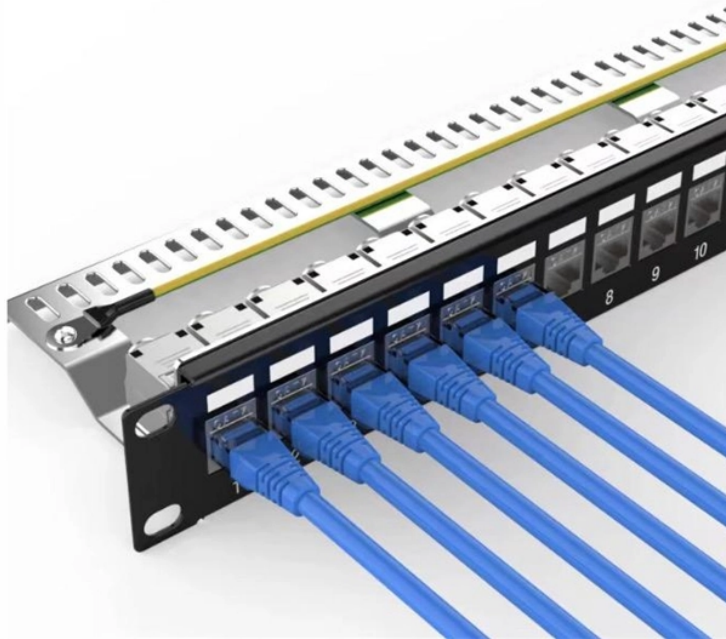
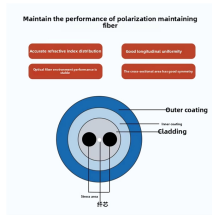


## 30 circuits in a household electrical distribution box



## 30 circuits in a household electrical distribution box



Learn how to wire a 30 amp breaker box with a diagram. Step-by-step instructions for a safe and efficient installation.



Get free shipping on qualified 30-Circuit Breaker Boxes products or Buy Online Pick Up in Store today in the Electrical Department.



Professional home circuit calculator per NEC Article 210 and 220. Determines the total number of branch circuits, wire sizes, breaker ratings, and GFCI/AFCI protection requirements for residential electrical ...



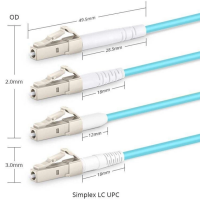
Get free shipping on qualified 30 Spaces Breaker Boxes products or Buy Online Pick Up in Store today in the Electrical Department.



It houses the branch circuit breakers and the wiring required to distribute power to individual circuits. It is UL listed for residential and commercial applications, and it serves as main breaker for service ...



The document provides details for designing the electrical distribution box and circuits for a residence. It includes specifications for the main circuit breaker such as size, type, and tripping capacity.



Learn how to choose the right home distribution box with our expert guide. Compare circuit capacity, IP ratings, breaker types & avoid common mistakes.



Your electrical meter box, mounted onto your outdoor main breaker panel or inside a wall, collaborates with the load center to safely distribute the correct amount of electricity to every room and outlet in ...



Get free shipping on qualified 30 amp, Subpanel Breaker Boxes products or Buy Online Pick Up in Store today in the Electrical Department.



They host circuit breakers designed to safely distribute the correct amount of electricity to every room and outlet in your home. The Home Depot has all your breaker box needs covered, with a wide ...

## Contact Us

For more information, pricing, or custom energy solutions, please contact us:

Website: <https://gdroofing.co.za>

Email: [sales@gdroofing.co.za](mailto:sales@gdroofing.co.za)

Phone: +27 72 418 9365

Address: 22 Electron Avenue, Isando, Johannesburg, 1600, South Africa

This document is for informational purposes only. Specifications subject to change without notice.

