

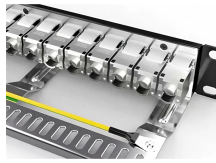
## 316 Material Distribution Box



## 316 Material Distribution Box



The HQPD-B-600/316L stainless steel distribution box meets all industry standards for electrical safety and reliability. It complies with international regulations for electrical distribution systems, ensuring ...



Discover our premium outdoor low voltage stainless steel distribution box, crafted from durable SS316 material. This electric power switchgear panel is designed for optimal performance in harsh ...




We offer all types of enclosures from small boxes to cabinets, with wall and floor mounting, made of AISI 304 and AISI 316 material. And from empty boxes to fully certified Instrumentation, Control or DCS ...

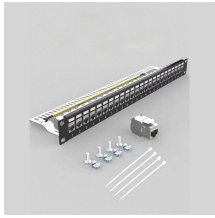



BARTEC stainless steel housings and distribution boxes are designed and approved for Zone 1 and 2 as well as Zone 21 and 22. They are particularly suitable for applications under extreme environmental ...



Junction Box SS316 Metal Distribution Outdoor Waterproof Sheet Stainless Steel Electric Enclosure Meter Control Boxes Metal Electrical Features of Stainless Steel 316 Junction Boxes:

<p><b>LED DISPLAY PANEL</b> CURRENT STATUS CLEARLY VISIBLE <small>IT CAN CLEARLY SHOW THE CURRENT STATUS AND POLYMER STATUS WITH EFFICIENT OPERATION AND HAND RESPONSE.</small></p> 	<p>R. STAHL''s high-quality terminal boxes are incredibly versatile. Enclosures are made of 316 stainless steel or glass fiber-reinforced polyester (FRP). Both fulfill the requirements of NEMA 4X and IP66 ...</p>
---	--

	<p>The stainless steel terminal box range, SSTB, with a IP 66 protection degree, is available off the shelf in many different sizes. The SSTB range is well suited for indoor and outdoor environments thanks to ...</p>
---	--

	<p>Select the right electrical enclosure for your environment and the accessories you''ll need to get it mounted and connected. Choose from our selection of stainless steel boxes, including corrosion ...</p>
--	---

	<p>With manufacturing and distribution centers in Indiana and California, we have established a customer centric product development process that enables us to react and respond to custom requirements ...</p>
---	--

## Contact Us

For more information, pricing, or custom energy solutions, please contact us:

Website: <https://gdroofing.co.za>

Email: [sales@gdroofing.co.za](mailto:sales@gdroofing.co.za)

Phone: +27 72 418 9365

Address: 22 Electron Avenue, Isando, Johannesburg, 1600, South Africa

This document is for informational purposes only. Specifications subject to change without notice.

