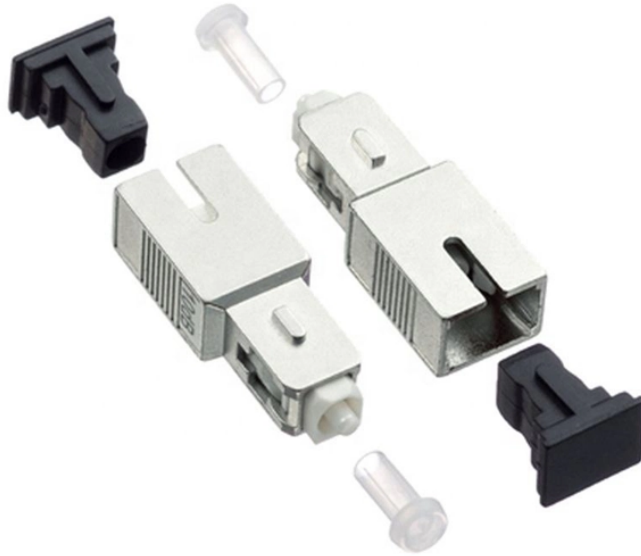


GDR Telecom Site Energy Systems

35kV bus voltage as low as 33kV



35kV bus voltage as low as 33kV



Medium Voltage (MV) refers to distribution systems operating between 1 kV and 72 kV. However, for practical and economic reasons, most medium voltage networks are limited to 36 kV.



Table 1 covers voltages from 1kV to 245kV and lists nominal system voltages, ...



Even at 34.5 kV, System VI gear can be as little as 37 inches tall. And System VI gear has a significantly smaller footprint than conventional gear. Single-or three ...



Dielectric tests, power frequency withstand for all voltages and impulse withstand for medium voltage, are specified in the standards. The design must pass these tests. How a manufacturer designs ...



Purpose: These specifications and drawings provide general minimum requirements for constructing standard wood pole structures and assemblies for 34.5 kV through 69 kV transmission lines.



The dielectric strength is verified by testing the switchgear with rated values of short-duration power-frequency withstand voltage and lightning impulse withstand voltage according to IEC 62271-1.



Table 1 covers voltages from 1kV to 245kV and lists nominal system voltages, maximum equipment voltages, insulation levels, and minimum indoor and outdoor phase-to-earth and phase-to-phase ...



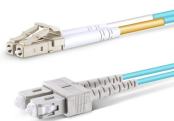
Minimum Phase-to-Phase Induced test levels for 3 phase Distribution Transformers shall be not less than 2.0 times nominal system voltage, and never less than the applied test level from line to ground.



These calculations provide important guidance on the voltage application for hipot testing of power cables rated from 1 kV to 33 kV as per IEC 60502 and IEEE 400 standards.



Its compact, modular design allows for space optimization and flexibility. Installation is fast as most panels are factory-tested and gas-filled, eliminating site gas work, and the custom low-voltage ...



Eaton's Power Xpert IGX compact medium-voltage switchgear offers an industry-leading footprint, superior ratings, maintenance free medium-voltage compartment, enhanced safety features and ...



The metal-enclosed non-segregated phase bus runs are designed for 635 V, 5 kV, 15 kV, 27 kV and 38 kV service in accordance with ANSI C37.23. Available ratings are shown in Table 11.1-8.

Contact Us

For more information, pricing, or custom energy solutions, please contact us:

Website: <https://gdroofing.co.za>

Email: sales@gdroofing.co.za

Phone: +27 72 418 9365

Address: 22 Electron Avenue, Isando, Johannesburg, 1600, South Africa

This document is for informational purposes only. Specifications subject to change without notice.

