

GDR Telecom Site Energy Systems

42u network rack filled with heavy weight



42u network rack filled with heavy weight



The Eaton SRH422442W SmartRack® 42U Heavy-Duty Enclosure is engineered to support the growing demands of AI servers, edge computing, and enterprise IT applications.



This SmartRack® 42U rack enclosure is constructed from heavy-duty steel 2.5 millimeters thick with reinforced structural elements, including extra welds and gussets for greater strength, extra ...



42U heavy-duty extra-deep extra-wide rack enclosure houses, organizes, and secures heavy AI servers and other equipment used in edge and enterprise applications.



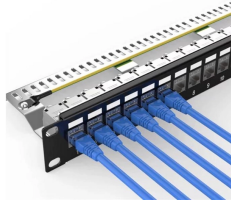
The Blackstone BSC 42U 960mm network cabinet does the job for offices and retail environments that require a secure, heavy-duty Standalone storage option for standard 19" rack-mount servers and ...



42U heavy-duty extra-deep white rack enclosure houses, organizes and secures large AI servers and other rack equipment used in edge and enterprise applications.



Our cabinet is easily assembled for quick installation and contains heavy-duty locking casters for movement and leveling feet for usage when the fully racked cabinet must remain in place. This ...



Lenovo Heavy Duty Rack Cabinets are industry-standard 19-inch 42U and 48U data center cabinets that are designed for high performance and high availability server and storage ...



Secure and organize IT equipment with this 42U Server Rack. Heavy-duty data center enclosure with lockable doors, cooling support, removable panels, and 3,000 lb load capacity.



Fully assembled floor rack with built-in fans, removable panels, and lockable casters, engineered for optimal airflow, heavy-duty stability, and easy equipment access.



This SmartRack 42U rack enclosure is constructed from heavy-duty steel 2.5 millimeters thick with reinforced structural elements, including extra welds and gussets for greater strength, extra ...



Store your server, network and telecommunications equipment in this sturdy 42U mobile open frame network rack with wheels. With a 2-post design, the rack saves floor space and its dual-post, open ...

Contact Us

For more information, pricing, or custom energy solutions, please contact us:

Website: <https://gdroofing.co.za>

Email: sales@gdroofing.co.za

Phone: +27 72 418 9365

Address: 22 Electron Avenue, Isando, Johannesburg, 1600, South Africa

This document is for informational purposes only. Specifications subject to change without notice.

