

## 48-core fiber distribution box and fiber splicing tray



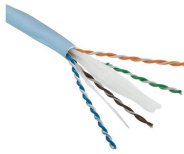
## 48-core fiber distribution box and fiber splicing tray



This unit box make fiber splicing, fiber cable storage, cable distribution in one set, each fused distribution module can be individually extracted, satisfy the need of on and off the frame operation.



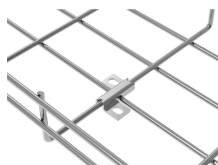
The FTTH 48 Core Fiber Access Terminal Box is a new-gen product for FTTH. Light and compact, it's ideal for connecting and protecting FTTH fiber cables. The FDB-48 Series 48-port Fiber Distribution ...



The HTB8048 Fiber Optic Terminal Box is a versatile, high ...



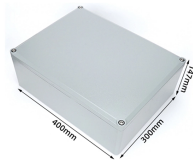
Efficiently manage and distribute up to 48 fiber optic connections with the robust, weatherproof S1 ODB M12 fiber distribution box, ideal for telecommunications, data centers, and versatile network ...



The HTB8048 Fiber Optic Terminal Box is a versatile, high-capacity termination solution for FTTx applications, offering secure fiber splicing, distribution, and cable management.



To prove you're not a bot, solve this simple math problem. The machine translated document is now available for download.



It can support patching for up to 48x SC fiber optic connections. The enclosure has a swing-out 2 door with a padded lock and key for security. Wall mount enclosure provides a safe and clean ...



It can support patching for up to 48x SC fiber optic connections. The enclosure ...



Plug-In Fiber Optic Distribution Box 48 Port Splice Tray Pigtail Wall Mount Features: It is integrated with a splice cassette and cable management rods. Manage fibers in a reasonable fiber radius condition. ...



This enclosure integrates fiber splicing, splitting, storage, and distribution functions in a single unit, while providing robust mechanical protection and organized cable management for outdoor FTTX network ...



Abalone Tech's FDB18-48C Plastic Optical Fiber Distribution Box (ODB) is a compact and modular fiber management solution designed for efficient splicing, coupling, and distribution of up to 48-core fibers. ...



This distribution box has a maximum capacity of 48 cores, with the ability to splice up to 96 cores in total. Our IP65-rated fiber distribution box is versatile for indoor and outdoor use, mountable on walls ...

## Contact Us

For more information, pricing, or custom energy solutions, please contact us:

Website: <https://gdroofing.co.za>

Email: [sales@gdroofing.co.za](mailto:sales@gdroofing.co.za)

Phone: +27 72 418 9365

Address: 22 Electron Avenue, Isando, Johannesburg, 1600, South Africa

This document is for informational purposes only. Specifications subject to change without notice.

