

## 90-degree straight bend head cable tray 100



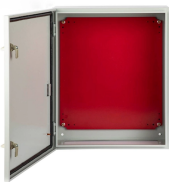
## 90-degree straight bend head cable tray 100



The cable tray products are designed for use in numerous commercial and industrial applications. Available in standard and bespoke sizes with various finish options.



Choosing between cable tray and cable trunking depends on protection, ventilation, access, and how “finished” the installation needs to look. This guide explains the ...



Heavy Duty 90 Degree Flat Bend 75mm £ 24.19 ex. VAT - £ 29.03 inc. VAT Heavy Duty 90 Degree Flat Bend 75mm Galvanised £ 35.06 ex. VAT - £ 42.07 inc. VAT Heavy Duty 90 Degree Flat Bend ...



90° bend, horizontal, for all mesh cable trays of 55 mm side height. Find out more about 90° mesh cable tray bend FT 100 | 3.9 | no now! OBO - your provider for Cable support systems.



We offer a variety of cable tray flat bends available for light, medium, and heavy duty cable tray systems in varying sizes to suit your requirements.



This high-quality 90-degree horizontal bend provides a smooth transition for cable tray systems. Its durable, copper-free aluminum construction ensures long-lasting performance in demanding ...



[Metal Cable Tray Home](#) » [Products](#) » [Metal Cable Tray](#) » [Fittings](#) » [HD 90 Deg Flat Bend 100mm](#)



Cable Tray Junction Kit, 90 Degree, Carbon Steel  
Cable Tray Fitting, 90° Junction Kit. Material: Carbon Steel. Finish: Electroplated Zinc. Includes: (1) Hardware for (1) Tee (2) 90° Bends.



Our Cable Tray system offers an effective economical solution to the protection, support and transportation of pipework and cables in commercial and industrial installations. 90° Bend Heavy ...



Description 90 Degree External Riser to suit Heavy Duty Cable Tray Pre Galvanised

## Contact Us

For more information, pricing, or custom energy solutions, please contact us:

Website: <https://gdroofing.co.za>

Email: [sales@gdroofing.co.za](mailto:sales@gdroofing.co.za)

Phone: +27 72 418 9365

Address: 22 Electron Avenue, Isando, Johannesburg, 1600, South Africa

This document is for informational purposes only. Specifications subject to change without notice.

