

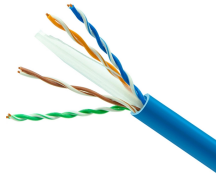
## A Level 1 Temporary Distribution Box



## A Level 1 Temporary Distribution Box



Find reliable temporary power distribution centers with circuit breaker protection. Shop professional-grade options for construction and outdoor use.



The specifications for the Mini X-Treme Box indicate that it uses a 125/250V 30A ...



These temporary power distribution boxes feature 1, 3 or 4 adjustable circuit breakers, with a range of amperage and voltage ratings. The Load Master® Series portable power distribution racks are ...



Power Distribution Box, NEMA 3R Enclosure with Roll Cage Handles. Includes: (1) 50 Amp, 125/250 Volt AC, Locking, California Style CS63 Power Inlet and Feed Thru (1) 30 Amp, 250 Volt AC NEMA ...



GFCI meets UL 943 requirements with 4-6 milliamp trip level, <25 milliseconds trip time Rating: 50-Amp 125/250V 3 Pole 4 Wire, Power Inlet CS6375, Feed-Thru CS6369



Walther's Portable Power Distribution Units (PDU) safely centralize and distribute power from temporary power poles or job-site generator. Fitted with multiple outputs, Overcurrent Protection included.



E-abel manufactures this type of temporary power distribution box and related E-abel electrical enclosure solutions for construction, municipal, industrial, and outdoor event projects.



Choose from our selection of temporary power distribution boxes in a wide range of styles and sizes. Same and Next Day Delivery.



The specifications for the Mini X-Treme Box indicate that it uses a 125/250V 30A L14-30P twist-to-lock inlet. This type of inlet is typically used for single-phase power, not three-phase power.



Power Tech Temporary Power Distribution Box, ETL approved for indoor/outdoor use. Features 15/20A outlets & 30A/50A Twistlocks for contractor needs.



Power Tech®'s Temporary Power Distribution Box is used by contractors on jobsites (indoor or outdoor) to provide and distribute power from temporary power poles or jobsite generators.

## Contact Us

For more information, pricing, or custom energy solutions, please contact us:

Website: <https://gdroofing.co.za>

Email: [sales@gdroofing.co.za](mailto:sales@gdroofing.co.za)

Phone: +27 72 418 9365

Address: 22 Electron Avenue, Isando, Johannesburg, 1600, South Africa

This document is for informational purposes only. Specifications subject to change without notice.

