

A best-selling energy management system for use on islands



Overview

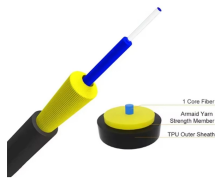
In this paper, we propose a novel resilience-oriented energy and load management framework for island microgrids, integrating a multi-objective optimization function that explicitly minimizes load curtailment, energy losses, voltage deviations, emissions, and energy procurement costs. In this paper, we propose a novel resilience-oriented energy and load management framework for island microgrids, integrating a multi-objective optimization function that explicitly minimizes load curtailment, energy losses, voltage deviations, emissions, and energy procurement costs. For islands and remote communities, access to energy is more than a convenience—it's a necessity. GSL ENERGY provides comprehensive off-grid and hybrid power solutions that integrate solar generation, lithium battery storage, and intelligent energy management to deliver clean, uninterrupted power. For remote areas such as plateaus, border regions and islands, which are beyond the coverage of public power grids, islanded microgrids have become the key technology to address electricity access challenges. However, optimizing energy management efficiency remains a major challenge. Existing approaches primarily focus on minimizing operational costs or emissions but fail to simultaneously address

load. In technical terms, careful balancing of the portfolio of resources, coupled with energy storage, can allow most islands to achieve a much higher penetration of renewable resources than has previously been considered feasible. Island. The top energy management platforms include Siemens' Simatic, Schneider Electric's EcoStruxure, Johnson Controls' Metasys and Honeywell Forge Total energy-related CO₂ emissions increased by 0.8% in 2024, hitting an all-time high of 37.8 Gt CO₂ according to the International Energy Agency.

A best-selling energy management system for use on islands



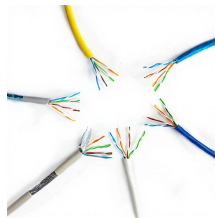
Considering the challenges of RES integration and interoperability, especially in island energy systems, this paper outlines the development, implementation, and use of an integrated cloud ...



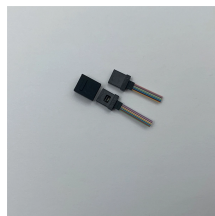
Objectives Against the backdrop of energy resource scarcity and increasing environmental demands, distributed energy supply technologies, particularly renewable energy technologies, have ...



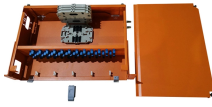
IEI develops comprehensive, integrated, and actionable renewable energy conversion strategies for shifting island electric supply systems from high levels of dependence on expensive fossil fuels to ...



GSL ENERGY offers complete off-grid energy storage solutions tailored for island homes, resorts, commercial facilities, and microgrids—helping you transition to a sustainable, self-sufficient power ...



Established in 2003, GridPoint is an energy management platform aimed at optimising energy use in commercial properties. It makes use of advanced analytics, real-time monitoring and ...



Energy management platforms can help to reduce energy waste. The top energy management platforms include Siemens' Simatic, Schneider Electric's EcoStruxure, Johnson ...



For remote areas such as plateaus, border regions and islands, which are beyond the coverage of public power grids, islanded microgrids have become the key technology to address electricity access ...



This paper presents the key outcomes of the Management Energy Systems for Smart Islands (MESSI) project, aimed at supporting the European Commission's goal of c



The proposed method offers a scalable, real-time implementable solution for microgrid operators seeking to enhance resilience against renewable energy intermittency and optimize energy...



Find the best Energy Management Software for your organization. Compare top Energy Management Software systems with customer reviews, pricing, and free demos.

Contact Us

For more information, pricing, or custom energy solutions, please contact us:

Website: <https://gdroofing.co.za>

Email: sales@gdroofing.co.za

Phone: +27 72 418 9365

Address: 22 Electron Avenue, Isando, Johannesburg, 1600, South Africa

This document is for informational purposes only. Specifications subject to change without notice.

