

A laser sword is not a diode



Overview

Contrasting with diodes, true lasers operate based on the phenomenon of stimulated emission—a process that inherently demands higher sophistication. A light-emitting diode (LED) operates through electroluminescence, a phenomenon observed when an electric current passes through a semiconductor. The laser diode chip is the small black chip at the front; a photodiode at the back is used to control output power. SEM (scanning electron microscope) image of a commercial laser diode with its case and window cut away. Assuming an efficient way to heat material, those charged particles still need to come from somewhere. Hacksmith's prototype sword was tethered to heavy tanks of gas, and even then, the stream of hot plasma was too brief for an. What is a laser diode?

A laser diode, which is a term created from the acronym Light Amplification by Stimulated Emission of Radiation (LASER), is the most advanced version of an LED.

A laser sword is not a diode



Unlike a regular diode, the goal for a laser diode is to recombine all carriers in the I region, and produce light. Thus, laser diodes are fabricated using direct band-gap semiconductors.



However, it is still not possible to cut metal or glass because the wavelength of these diodes is not in the necessary range. If you want to cut a house or car in half, you'll probably have to ...



[Overview](#)[Theory](#)[History](#)[Types](#)[Reliability](#)[Applications](#)
[Common wavelengths](#)[Further reading](#)



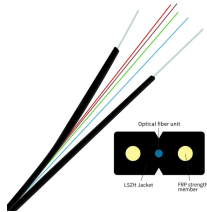
The world of diodes and true lasers is an intriguing study in contrast. Diodes, with their versatility and efficiency, cater to ubiquitous lighting needs, while lasers, endowed with coherence ...



For industrial applications that require high-power light such as machining and engraving, laser diodes are the better option. On the ...



You might think a lightsabre is made of light, but light doesn't work like a sword. Light keeps going unless it hits something—it doesn't stop at a fixed length.



Lightsabers - fictitious swords made of... something glowy - are the quintessential melee weapon of the Star Wars universe. No self-respecting Jedi would be complete without one. But depending on how ...



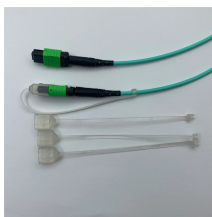
Unlike traditional LEDs, a laser diode works on a different principle, converting electrical energy into optical energy to produce a high-intensity, monochromatic coherent light.



Diode lasers actually work much like gas lasers, except that special semi-conductor materials take the place of the gas. As a result of current flowing through the semiconductors, light is ...



For industrial applications that require high-power light such as machining and engraving, laser diodes are the better option. On the other hand, LEDs are used in regular lighting applications like in your ...



Laser diode applications Although laser diodes may not be the most commonly seen components when looking at general electronic design, these diodes are used in many products that are in everyday ...



Both LEDs and laser diodes are semiconductor devices that emit light. However, they differ significantly in their emission characteristics, energy efficiency, working principles, applications, and safety ...

Contact Us

For more information, pricing, or custom energy solutions, please contact us:

Website: <https://gdroofing.co.za>

Email: sales@gdroofing.co.za

Phone: +27 72 418 9365

Address: 22 Electron Avenue, Isando, Johannesburg, 1600, South Africa

This document is for informational purposes only. Specifications subject to change without notice.

