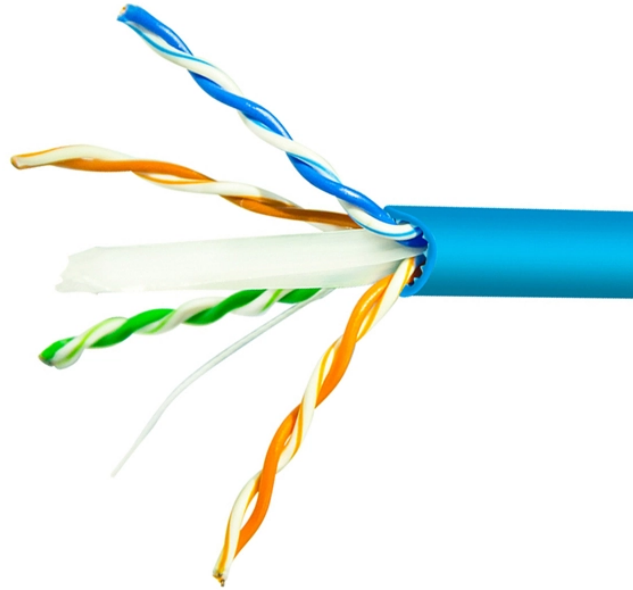
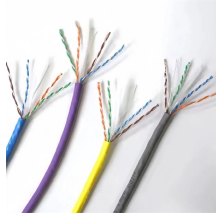


# **Adjustable attenuator GKTS2**



## Adjustable attenuator GKTS2



Product Summary: CHUNYE Adjustable Attenuator GKTS2-6-40-1-B DC-1G DC-2.5G DC-3G From CHUNYE



Programmable attenuators are generally used to control power level of microwave signals by volts control or computer programmable auto control manner. They are small with high accuracy and high ...



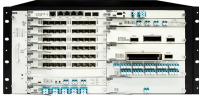
Attenuator GKTS2-4-10-1-B DC-1G DC-2 5G DC-2 DC-3G stepping adjustable attenuator on sale, buy cheap Attenuator GKTS2-4-10-1-B DC-1G DC-2 5G DC-2 DC-3G stepping adjustable attenuator ...



Rotary Step attenuators are used to adjust the power signal level by step within certain frequency range without power off, they can also be used to adjust the test system's power level as inset attenuators, ...



The TWGKTS2-2-70-18-A6 from Techniwave is a RF Variable Attenuator with Frequency DC to 18 GHz, Attenuation Range 0 to 70 dB, Attenuation Step 1 dB, Power 2 W, Insertion Loss 1.5 dB.



Programmable attenuators are generally used to control power level of microwave signals by volts control or computer programmable auto control manner. They are small with high accuracy and high ...



Attenuators -variable or stepwise- can be used to adjust the level of the power signal continuously or incrementally within a given frequency range. They can also be used to adjust the power level of the ...



This listing is for a SHX GKTS2-6-90-2.5-B Step Attenuator, a precision RF/microwave component used in laboratories, communications systems, and test setups. The device provides ...



Dimensions 2W:115x106x83mm  
 10W:126x106x83mm low Rotary Step attenuators are used to adjust the power signal level by step within certain frequency range, they can also be used to adjust the test ...

## Contact Us

For more information, pricing, or custom energy solutions, please contact us:

Website: <https://gdroofing.co.za>

Email: [sales@gdroofing.co.za](mailto:sales@gdroofing.co.za)

Phone: +27 72 418 9365

Address: 22 Electron Avenue, Isando, Johannesburg, 1600, South Africa

This document is for informational purposes only. Specifications subject to change without notice.

