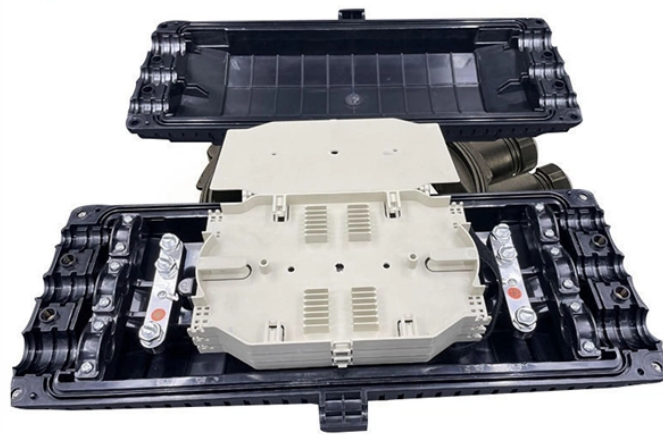







Advantages and disadvantages of low-loss optical communication bit error rate testers



Overview

A low BER indicates a high-quality signal with minimal errors, while a high BER suggests significant signal degradation, potentially leading to data loss and network downtime. Bit Error Rate (BER) is a measure of telecommunication signal integrity based on the quantity or percentage of transmitted bits that are received incorrectly. Essentially, the more incorrect bits, the greater the impact on signal quality. [BER = frac. The OptoBERT family of BERTs offers the best value in the industry for bit-error-ratio testing of optical and electrical components, subsystems and systems. Achieving a high SNR is vital to minimize errors and enhance the system's reliability. With the advent of optical fiber as a transmission medium and semiconductor laser as a light source.

Advantages and disadvantages of low-loss optical communication b

 <p>Product Catalog</p> <ul style="list-style-type: none">Fiber Patch CordPLC SplitterOptical Fiber Cable Joint EnclosureAdapterFTTH Terminal Box	<p>BERT or bit error rate test is a testing method for digital communication circuits that uses predetermined stress patterns consisting of a sequence of logical ones and zeros generated by a test pattern ...</p>
	<p>Ultra-low bit error rate graded-index plastic optical fiber link with enhanced optical return loss tolerance and alignment robustness is proposed, enabling simplified PAM4 transceiver design and offering a ...</p>
	<p>This paper explain how to determine the link budget design and receiver sensitivity design in term of bit error rate, BER and Q factor for different length and attenuation.</p>
	<p>This comprehensive guide will explore the causes of Bit Error Rate in optical communications, methods for measuring and optimizing BER, and its impact on network performance.</p>
	<p>In optical communication systems, the key overriding metric is the bit error rate (BER), which defines how many errors one can expect for a given number of sent bits.</p>



Compared to conventional metallic cables, optical fiber provides an advantage of low loss ($\sim 0.2\text{dB/km}$) and wide bandwidth (several hundred MHz to THz) to enable long-distance, high-capacity ...



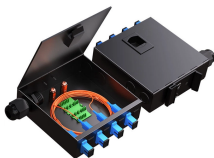
OPTELLENT's test and measurement equipment are designed to offer unprecedented low-cost of ownership and ease of use. The Company's test & measurement solutions are used in product ...



The performance of optical communication systems is crucial to ensure efficient and reliable data transmission. In this article, we will delve into the key performance metrics that are ...



The noise distributions and the bit-error rates are derived, and system performance is discussed for different cases. The performance of coherent systems is limited by the beat noise.



Bit Error Rate (BER) is a measure of telecommunication signal integrity based on the quantity or percentage of transmitted bits that are received incorrectly. Essentially, the more incorrect bits, the ...

Contact Us

For more information, pricing, or custom energy solutions, please contact us:

Website: <https://gdroofing.co.za>

Email: sales@gdroofing.co.za

Phone: +27 72 418 9365

Address: 22 Electron Avenue, Isando, Johannesburg, 1600, South Africa

This document is for informational purposes only. Specifications subject to change without notice.

