

Advantages and disadvantages of using a 1000mm deep telecom shelter for campus network



Overview

In this discussion, we will explore the importance of telecom shelters, the different types available, key features to consider, benefits of insulation, security measures, weather resistance considerations, best practices for installation, and maintenance tips for telecom . In this discussion, we will explore the importance of telecom shelters, the different types available, key features to consider, benefits of insulation, security measures, weather resistance considerations, best practices for installation, and maintenance tips for telecom . Telecommunication shelters and enclosures play a crucial role in the seamless functioning of our modern communication networks. These structures provide a secure and controlled environment for critical field equipment, ensuring its protection against external elements and potential threats. With. Underground cables are pulled in conduit that is buried underground, usually 1-1.2 meters (3-4 feet) deep to reduce the likelihood of accidentally being dug up. In extreme cold climates, cables may need to be buried at greater depths where there temperatures are colder and frost

penetrates to. Telecommunications rooms should be located as close as possible to the centre of, and on the same floor as the area it is intended to serve and so that cable length does not exceed 90 m or 295 feet. Standard telecom room dimensions are provided below. Key Takeaway: Data and telecom trenching is essential because it protects communication infrastructure, reduces future disruptions, and. Maxfaith Shelter is a "one-step" answer for thermally insulated, water-tight and dust-proof enclosure for applications such as Cellular & Basic Telecom Network, Radar Communication Systems, Scientific & Defence Applications and all applications where internal conditions are to be protected from the.

Advantages and disadvantages of using a 1000mm deep telecom sh



In a world of insatiable connectivity demands, telecom network design forms the backbone of efficient and reliable communication systems. Robust telecom networks ensure ...



Standard telecom room dimensions are provided below. At a minimum the room dimensions must provide the following clearances: 0.75 m (2.5 ft) in front of, behind and on one side of the network ...



Doorways that are planned for use during equipment delivery should have fully opening (e.g., to 180 degrees if local building codes permit), lockable doors that are at least ≈ 0.91 m (3 ft) wide and ≈ 1.98 ...



Data and telecom trenching is most effective when planned early in the construction process. Late installation can lead to conflicts with foundations, paving, or landscaping, increasing ...



Underground cables are pulled in conduit that is buried underground, usually 1-1.2 meters (3-4 feet) deep to reduce the likelihood of accidentally being dug up.



Maxfaith Shelter is equipped with specially designed angles as well as corner panel to act as main structural element, which also define the coordinates. Standard panels are used for spaces between ...



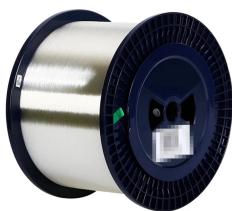
Successful telecommunications construction begins with a meticulous network design that addresses coverage objectives, capacity requirements, and technology selection.



Learn the key considerations and best practices for designing telecom shelters. Explore structural requirements, environmental factors, and material choices for optimal performance.



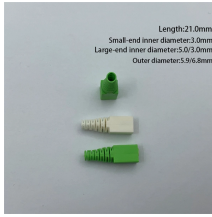
Lattice towers offer rigidity with low wind resistance, while guyed designs reduce cost and use minimal materials. Monopoles suit city settings with minimal footprint.



The Telecommunications Distribution Design Guide (TDDG) is written to communicate the requirements of Clemson University (Clemson) for the design and installation of telecommunications distribution ...



Underground cables are pulled in conduit that is buried underground, usually 1-1.2 meters (3-4 feet) deep to reduce the likelihood of accidentally being dug up.



In this discussion, we will explore the importance of telecom shelters, the different types available, key features to consider, benefits of insulation, security measures, weather resistance ...

Contact Us

For more information, pricing, or custom energy solutions, please contact us:

Website: <https://gdroofing.co.za>

Email: sales@gdroofing.co.za

Phone: +27 72 418 9365

Address: 22 Electron Avenue, Isando, Johannesburg, 1600, South Africa

This document is for informational purposes only. Specifications subject to change without notice.

