

Aggregator Switch Agent



Overview

It is a networking tool called an aggregation switch that enables the consolidation of several network connections into a single link. The three layers of a traditional three-layer network design are the core layer, aggregation layer, and access layer. Each agent processes the input independently, and their results are collected and aggregated. This approach is well-suited for scenarios where diverse perspectives or solutions are valuable, such as. An aggregate switch is a high-capacity network switch that consolidates connections from multiple access switches, acting as a central point for managing network traffic and providing enhanced bandwidth capabilities. For this reason, we've delivered a data center-influenced standalone OLT architecture paired with non-blocking leaf-spine fabric and aggregation switching. A key. The GWN7830 Series of Layer 3 Aggregation Network Switches offers 3 model options, with up to 24 SFP ports and 12 SFP+ ports, which are ideal for medium-to-large businesses and enterprises that require high-performance networks with maximum capacity and control.

Aggregator Switch Agent



What is the Role of the Aggregation Switch in the Network? The aggregation switch is located in the middle of the network architecture, which is equivalent to a middle-level manager of a ...



An aggregate switch is a high-capacity network switch that consolidates connections from multiple access switches, acting as a central point for managing network traffic and providing ...



These aggregation switches support advanced VLAN for flexible traffic segmentation, advanced QoS for prioritizing network traffic, IGMP/MLD Snooping for optimizing network performance, and ...



An 8-port, Layer 2 switch made for 10G SFP+ connections.



Each agent processes the input independently, and their results are collected and aggregated. This approach is well-suited for scenarios where diverse perspectives or solutions are ...



Switch aggregation, also known as link aggregation or trunking, is a method used in computer networking to combine (aggregate) multiple network connections in parallel.



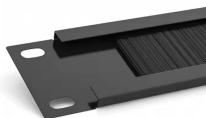
The EX3024F is a fiber aggregation switch that has all 10 Gbps SFP+ fiber ports. It also has dual internal power supplies for additional robustness and redundancy.



Discover the role of aggregation switches. Explore differences between aggregation, access, and core switches, and choose the right model for your network.



It is a networking tool called an aggregation switch that enables the consolidation of several network connections into a single link. This makes it possible to boost bandwidth and improve network ...



For this reason, we have delivered a data center-influenced standalone OLT architecture paired with non-blocking leaf-spine fabric and aggregation switching. A key characteristic of these leaf-spine ...

Contact Us

For more information, pricing, or custom energy solutions, please contact us:

Website: <https://gdroofing.co.za>

Email: sales@gdroofing.co.za

Phone: +27 72 418 9365

Address: 22 Electron Avenue, Isando, Johannesburg, 1600, South Africa

This document is for informational purposes only. Specifications subject to change without notice.

