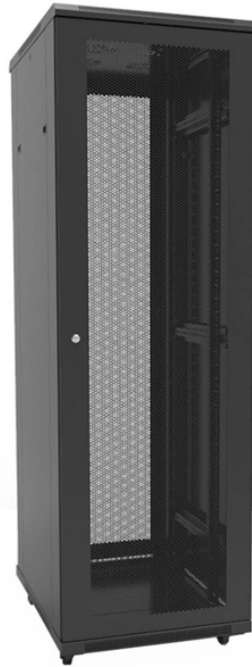
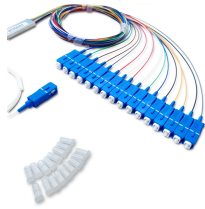


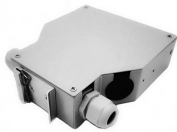
## Alarm Cable Tray Separation



## Alarm Cable Tray Separation



This design statement provides a defensible, standards-based justification for using a 300 mm physical separation in lieu of a roof-mounted 120-minute fire barrier.



Fire alarm circuits require dedicated pathways or 2-inch minimum separation depending on circuit type per Article 760. Cable separation is a code-mandated safeguard that ensures signal ...



Based on NEC Article 760, this post covers fire alarm cable separation, class 1, class 2 and class 3 circuits, power-limited fire alarm, PLFA, non power-limited fire alarm, NPLFA, fire alarm wiring ...



NFPA 731 Section 4.6.3.4 requires at least a 2-inch separation between low voltage security system wiring and power or lighting circuits unless the cable is listed for closer proximity or installed in a ...



Cable and conductors of two or more power-limited fire alarm circuits, communications circuits, or Class 3 circuits shall be permitted within the same cable, enclosure, cable tray, raceway, ...



This article was written to support the installation of two separate Type TC-ER cables — one supplying emergency loads, and the other supplying non-emergency loads — within a shared ...



Power supply and fire alarm circuit conductors are permitted in the same enclosure, cable, or raceway only if connected to the same equipment.



In specific enclosures and manholes, they may be installed together if they connect to equipment and meet defined separation standards. Additional guidelines for cable trays and other scenarios ...



It defines cable trays and their components. It provides rules for acceptable wiring methods that can be installed in cable trays, including conditions for use. It addresses uses permitted and not permitted ...



This guide outlines cable tray segregation techniques for improved safety and reliability in electrical cable management.

## Contact Us

For more information, pricing, or custom energy solutions, please contact us:

Website: <https://gdroofing.co.za>

Email: [sales@gdroofing.co.za](mailto:sales@gdroofing.co.za)

Phone: +27 72 418 9365

Address: 22 Electron Avenue, Isando, Johannesburg, 1600, South Africa

This document is for informational purposes only. Specifications subject to change without notice.

