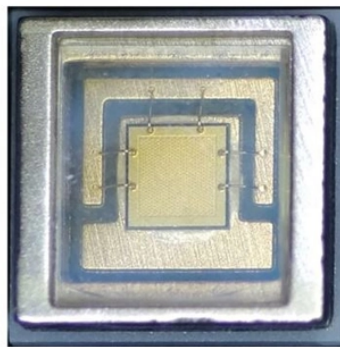


# Albania Delivery Date for G 652D Butterfly Drop Cable



## Overview

This outdoor butterfly drop cable is designed for outdoor wiring, featuring a metal reinforcement for enhanced mechanical strength. Its LSZH sheath offers environmental friendliness and excellent fire safety, while also being resistant to UV, moisture, and chemicals. Specifications are for product as supplied by Prysmian: any modification or alteration afterward of product may give different result. The information contained within this document must not be copied, reprinted or reproduced. The Soft Tube Cable (STC) is a non-metallic, longitudinal water-protected outdoor fibre optic cable, designed for the construction of optical infrastructure networks (back-bones, distribution and access). It contains Soft Tubes, for fast and easy access to the fibres (without tooling), to avoid the. STL DROP-LITE Flat Drop Dielectric Fiber Optic Cable offers the ease of installation in an easy access, single-tube design. This cable has optical Fibers presented in tube filled with a thixotropic gel, and is enclosed in a thermoplastic sheath. Two parallel of Fibe Reinforced Plastics (FRP) are placed at the two sides.

## Albania Delivery Date for G 652D Butterfly Drop Cable



The ITU-T G.652 fibre was originally optimized for use in the 1310 nm wavelength region, but can also be used in the 1550 nm region. This is the latest revision of a Recommendation that was first created ...



This outdoor butterfly drop cable is designed for outdoor wiring, featuring a metal reinforcement for enhanced mechanical strength. Its LSZH sheath offers environmental friendliness and excellent fire ...



\*Delivery notice: These items are built custom at time of order. If items are needed urgently, please call 1-800-232-5487 or email [customerservice@fiberplus](mailto:customerservice@fiberplus) for delivery times.



Superior Essex 6T0022101 Series 6T - DATASHEET  
2 FIBER ZWP FLAT DROP G.652D SM GEL TONE  
MDPE -SPSX Drop Cable, Fiber Optic Cable



End of commercialization is the last date Schneider Electric will accept an offer for this reference. However, after Sales Services (repair, spare parts, etc.) will continue until its end of life.



This cable has optical Fibers presented in tube filled with a thixotropic gel, and is enclosed in a thermoplastic sheath. The cables have two embedded strength members for anti-buckling property.



Procurement specification for 96 Core (4x12 G.652D & 4x12 G.654E) MULTI-LOOSE TUBE FIBRE OPTIC CABLE WITH STEEL WIRE Document Number SFOT04 ...



The cable can contain up to 96 fibres (type G.652D) protected in a single, stainless steel tube. For fibre counts greater than 96, the fibres are split between four stranded tubes. A polyethylene sheath is ...



APPLICABLE STANDARDS IEC / EN 60793-2-50 type B-652.D ITU-T Recommendation G.652.D

## Contact Us

For more information, pricing, or custom energy solutions, please contact us:

Website: <https://gdroofing.co.za>

Email: [sales@gdroofing.co.za](mailto:sales@gdroofing.co.za)

Phone: +27 72 418 9365

Address: 22 Electron Avenue, Isando, Johannesburg, 1600, South Africa

This document is for informational purposes only. Specifications subject to change without notice.

