

GDR Telecom Site Energy Systems

Algeria Maintenance Cold Connector 24-pin



Algeria Maintenance Cold Connector 24-pin



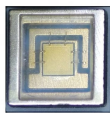
Industrial-grade heavy duty connectors by SMICO: 2,4,5,6,16 & 24 pin configurations. Vibration-resistant, high-current designs for harsh environments. Request quote now.



Mouser offers inventory, pricing, & datasheets for Pin (Male) 24 Position Circular Connectors.



Browse 24-pin ATX connectors and extension cables for PC builds. Find male, female, and adapter options for seamless connections.



The product will be reserved for you when you complete your order. The actual product may differ slightly from the image displayed on the website.



Mouser offers inventory, pricing, & datasheets for Pin (Male) 24 Position Pin & Socket Connectors.



3. 24 Pins: The connector has 24 pins, with a detachable 4-pin section, making it backward compatible with older 20-pin connectors. These pins supply different voltages (e.g., +3.3V, ...



Choose from our selection of 24 pole pin connectors, including over 100,700 products in a wide range of styles and sizes. Same and Next Day Delivery.



24 Pin Heavy Duty Multi Pin Connectors Female Insert Hot Runner Connector Part SO-HE-024-F Product Certification UL CUL CE ROHS DMT IEC-61984 Order No. 09330242701 Covers wide range ...



For flexibility choose between 4, 7, 12, 18 and 24 pins. The SCBrtc Connector Series will mostly be installed on cryostats which not stay at room temperature all time. During cooldown or cryogen filling ...

Contact Us

For more information, pricing, or custom energy solutions, please contact us:

Website: <https://gdroofing.co.za>

Email: sales@gdroofing.co.za

Phone: +27 72 418 9365

Address: 22 Electron Avenue, Isando, Johannesburg, 1600, South Africa

This document is for informational purposes only. Specifications subject to change without notice.

