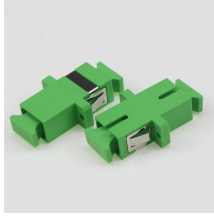


# GDR Telecom Site Energy Systems

## Als distribution box



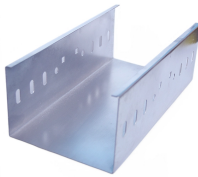
## Alsb distribution box



The ABB-MNS® distribution board and power cabinet are of a welded structure. The product comes in a good variety of shapes, and is highly versatile, structurally innovative, and mechanically rigid. Its ...



By providing organized circuit management, a distribution box allows for easy maintenance and ensures compliance with electrical safety codes in both residential and industrial environments.



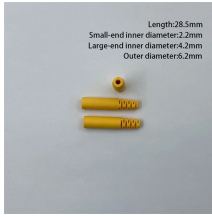
This price is for general public. Price may vary for registered customers. This email address is associated with more than one company. Please select the company you'd like to login to to continue:



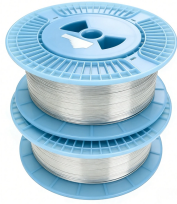
Automatic load switching board (ALSB) is used to reconnect the load to a source of power by automatically switching to a second (backup) input when power is lost at the first (main) input.



ASI distribution boxes have terminals for attaching input and output cables to distribute power and signal connections. Also known as power distributors, they're environmentally sealed to keep out dust and ...



Square D HCM I-Line Panelboard Breaker Box  
400Amp 600V Main Lug \$3,799.99 SKU# 302045



Our distribution boxes are perfect for industrial environments, catering to automation, robotics, and processing facilities. They provide cost-effective solutions through automated dispensing and ...



Power distribution boards are modular, compartmentalised low-voltage switchgear and distribution boards and form an important part of our range. We manufacture them strictly according to the ...



Distribution boxes are a great way to increase flexibility and cut costs. They lower your labor costs by reducing installation and troubleshooting time. They take up less space than loose wires, look neater ...



What are ALSB distribution boards? ALSB (General Low Voltage Board) distribution boards are essential for the distribution of electrical energy in low-voltage systems. These boards ensure ...

## Contact Us

For more information, pricing, or custom energy solutions, please contact us:

Website: <https://gdroofing.co.za>

Email: [sales@gdroofing.co.za](mailto:sales@gdroofing.co.za)

Phone: +27 72 418 9365

Address: 22 Electron Avenue, Isando, Johannesburg, 1600, South Africa

This document is for informational purposes only. Specifications subject to change without notice.

