

# Analysis of Sino-European Distribution Box Circuit



## Overview

This paper presents an in-depth analysis of the robust optimization of the China-Europe freight train transportation organization under uncertain cargo transportation demand. The study commences by constructing a robust optimization model tailored for specific environments, which is further. During Tuesday's phone conversation with European Council President Antonio Costa, Chinese President Xi Jinping rightly called on both sides to strengthen strategic communication, enhance strategic mutual trust, and uphold their partnership. Mounting challenges and diverging perceptions on and approaches to global and domestic affairs risk undermining the effectiveness of the bilateral dialogue. It is crucial to minimise all misperceptions and overcome. In the new landscape of the traditional Suez Canal route (SCR), China-Europe freight trains, and Arctic routes, starting from China-Europe trade, utilising China's railway freight rates and maritime data, incorporating the time value cost of goods into freight calculations, and constructing a. 51 were 3,637 trains running to Europe via the Eurasian container traffic in 2017, showing a 6.4 per cent increase. The new routes are shown in Figure 1. The active role of product right rate in various aspects of government

policy-makers and s are still in th followin akers and industry.

## Analysis of Sino-European Distribution Box Circuit



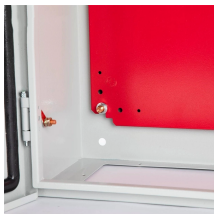
The insights of both Chinese and European scholars found in these pages should serve to enhance mutual understanding as we collectively seek to maximise mutual trust, optimise the scope for ...



The analysis of this damage type is taken for backup power supply systems, from small power synchronous generators.



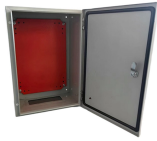
To evaluate the impact of the freight flow ratio of China-Europe Railway Express and China-Europe shipping, we manipulate the flow ratio of these transportation modes by adjusting the ...



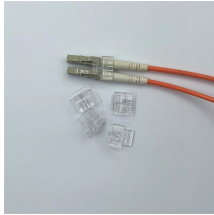
Using the ancient city of Xi'an as a characteristic embodiment of a logistics state, this paper demonstrates how the logistics state-driven CEFT has multiplied routes and redirected trade ...



Abstract: China's New Western Land-Sea Corridor (NWLC) has developed into an integrated transportation system characterized by multiple transportation modes and the dual support from ...



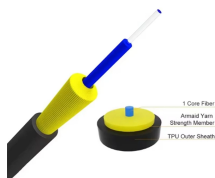
This paper not only analyses the share of the Arctic routes in Sino-European trade, but also analyses the advantageous regions of the Arctic routes, and visually depicts the spatial pattern of ...



772 from China back to Europe, so it would be highly relevant to also include respondents 773 from the European side. A systematic stakeholder analysis could also be made in a 774 future study to classify ...



Hungary's plan of undertaking a \$2 billion infrastructure project in Debrecen to transform the country's second-largest city into one of Europe's biggest battery production hubs highlights how ...



This paper presents an in-depth analysis of the robust optimization of the China-Europe freight train transportation organization under uncertain cargo transportation demand.



The results show that the NWLC will significantly enhance the resilience of transportation networks connecting the cities in China's Southwest and Northwest to Europe, but its impact on the port cities ...

## Contact Us

For more information, pricing, or custom energy solutions, please contact us:

Website: <https://gdroofing.co.za>

Email: [sales@gdroofing.co.za](mailto:sales@gdroofing.co.za)

Phone: +27 72 418 9365

Address: 22 Electron Avenue, Isando, Johannesburg, 1600, South Africa

This document is for informational purposes only. Specifications subject to change without notice.

