

Andorra Outdoor Edge Data Center Commissioning



Andorra Outdoor Edge Data Center Commissioning



This article focuses on the commissioning of data centers, with a particular emphasis on the Electrical Point of Delivery (EPOD). The EPOD is a critical component of data center infrastructure, serving as ...



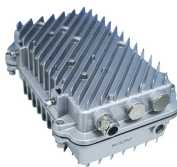
By completing projects on schedule, mitigating equipment failures, and minimizing ramp-up time for additional commissioning teams, we not only ensure the data center's reliability but also optimize ...



Learn how Zella DC's solutions can transform your IT infrastructure. Outdoor and containerised data centres that can be placed anywhere - process data right where it's needed, reducing latency and ...



Ready to elevate your data center project in Andorra? Contact DC Deployed to discover how our bespoke construction management services can benefit your business.



The EU Edge Observatory monitors the evolution of the climate neutral and secure edge node landscape and ecosystem across the EU Member States, mapping the deployment of nodes, ...



It will allow the Commissioning Team, including the Owner, Designer, General Contractor, and Commissioning Authority, to collaborate in real-time and manage the commissioning process from ...



Commissioning validates every critical system under real-world conditions and turns assumptions into proven performance. From power and cooling to fiber optics, commissioning ensures seamless ...



As digital needs continue to grow, data center operations, construction, and commissioning are essential to increased data demand and enhanced performance requirements. Intuva Solutions provides a ...



By following commissioning best practices including engaging the CxA early in the design process, creating a quality OPR document, and prioritizing the commissioning budget, data center owners can ...



ensure the successful commissioning of their data centers. The platform's adaptability and robust analytics capabilities make it an invaluable tool for managing complex infrastructure projects, ...

Contact Us

For more information, pricing, or custom energy solutions, please contact us:

Website: <https://gdroofing.co.za>

Email: sales@gdroofing.co.za

Phone: +27 72 418 9365

Address: 22 Electron Avenue, Isando, Johannesburg, 1600, South Africa

This document is for informational purposes only. Specifications subject to change without notice.

