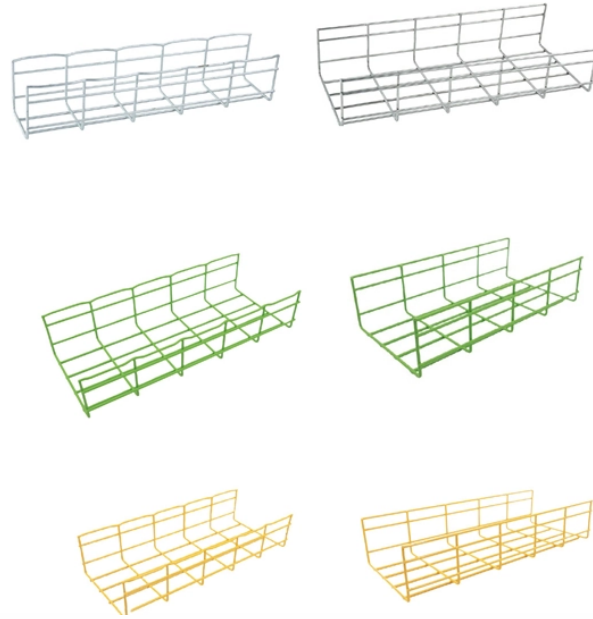
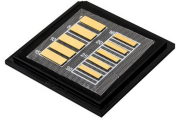


Angola Transparent Optical Cable G 654



Angola Transparent Optical Cable G 654



Characteristics of a cut-off shifted single-mode optical fibre and cable Superseded ...



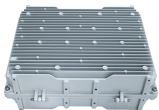
G.654.E fiber, with its increased core size and large effective area, enables the transmission of higher optical power. Compared to conventional G.652 fibers, G.654.E fiber can extend optical transmission ...







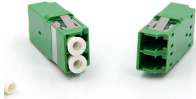

The superior attributes of TXF[®] optical fiber, compliant to ITU-T G.654.E, allow for the provision of an additional network margin that can be leveraged to enable reliable, high-data-rate transmissions over ...



Design and special properties • Light, thin and particularly robust cable • Cable for direct burial, in applications with high mechanical loads and in areas with rodents • Stranded minibundle (loose tube) ...



0.16 dB/km or less, which are fully compliant with ITU-T G.654.E. In this whitepaper, we review ITU-T G.654.E fibers from various points of view; what G.654.E is, what the application of G.654.E is, why ...

	<p>By deploying G.654.E fibre, the operator can maintain 800 Gb/s transmission over distances exceeding 600 km using only optical amplifiers, completely eliminating the need for regeneration.</p>
	<p>Ultra-low loss (ULL) optical fibers, PureAdvance™ series compliant with G.654.E, support high-capacity long-haul terrestrial networks. Employing pure silica core technologies, we promise to contribute to ...</p>
	<p>G654:Ultra low loss optical fiber, mainly used for transoceanic optical cable. The common core is pure SiO₂,while the ordinary ones need to be doped with ...</p>
	<p>In the mid-1980s, in order to meet the demand for long-distance communications over submarine cables, a pure quartz-core single-mode optical fibre was developed for use at 1550 nm wavelengths, where ...</p>
	<p>Single-mode fiber Multimode fiber Fiber type U G.655.D G.654.E ITU-T recommendation G.652.D / G.657.A1 G.655.D G.654.E Dimensional Specifications Core-Clad Concentricity 0.5 - 0.8 Cladding ...</p>
	<p>Details on Angola Cables including IPs, network ranges, ASNs, PoPs, edge CDNs, and applications.</p>

Contact Us

For more information, pricing, or custom energy solutions, please contact us:

Website: <https://gdroofing.co.za>

Email: sales@gdroofing.co.za

Phone: +27 72 418 9365

Address: 22 Electron Avenue, Isando, Johannesburg, 1600, South Africa

This document is for informational purposes only. Specifications subject to change without notice.

