

Are the cable tray expansion joints and the cable tray clearances the same



Overview

The spacing between expansion joints varies and is determined by the type of metals and the extent to which there is a change in temperature. A typical joint spacing of an aluminum system is 65 feet for a typical temperature change of 100°F. The metal gets longer, and the heat becomes excessive. In case there is no space to move it, the tray could become deformed or break the bolts that attach. NEC Article 392 outlines the key rules for installing and maintaining industrial cable tray systems. These systems, made from metal or plastic, are open structures designed to support electrical conductors, ensuring proper organization and safety. Here's what you need to know: Cable Types: Only use. 1993 NEC Section 300-7 (b) states that "Raceways shall be provided with expansion joints where necessary to compensate for the thermal expansion or contraction.

Are the cable tray expansion joints and the cable tray clearances th



Metal becomes bigger when hot and smaller when cold. Cable trays have no space to flex, and may bend or break bolts. In this guide, the expansion gaps are explained to be calculated, ...



For a 100° F differential (winter to summer), a steel cable tray will require an expansion joint every 128 feet and an aluminum cable tray every 65 feet. The temperature at the time of installation will dictate ...



Here''s what you need to know: Cable Types: Only use conductors rated for open-air environments, such as Tray Rated (Type TC) or Metal-Clad (Type MC) cables. Clearances: Maintain ...



NEMA has a free PDF installation guide that gives you the information needed to calculate how many expansion joints are needed. The code never tells you that you need one every so many ...



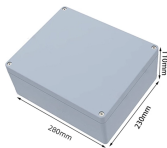
One of the most important features of cable tray is that tray cable can easily be installed in existing trays if there is space available. Cable tray wiring systems allow wiring additions or modifications to be ...



Supports must also be located on both sides of an expansion splice. The supports should be located within two feet of the expansion splice to ensure that the splice will operate properly.



When planning the cable tray expansion joint installation, determining the correct distance between expansion joints is crucial for ensuring the tray system can properly accommodate ...



Cable Tray Thermal Expansion Guidelines 1) Cable trays need expansion joints to allow for thermal contraction and expansion due to temperature changes. The NEC requires expansion joints where ...



A cable tray support should be located within 2 feet of each side of the expansion joint splice plates position. The cable trays must not be clamped to each support so firmly that the cable ...



This article explains the main requirements and good practices for cable tray systems, including tray types, materials, loading, supports, bonding, cable selection, and installation details.

Contact Us

For more information, pricing, or custom energy solutions, please contact us:

Website: <https://gdroofing.co.za>

Email: sales@gdroofing.co.za

Phone: +27 72 418 9365

Address: 22 Electron Avenue, Isando, Johannesburg, 1600, South Africa

This document is for informational purposes only. Specifications subject to change without notice.

