

Australian tariff cost optical line terminal PAM4



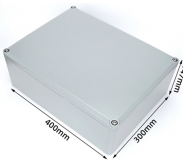
Australian tariff cost optical line terminal PAM4



Australian Local Charges - Effective from July 2025
Import and Export Detention Tariff - Effective from September 2022
TS LINES Ancillary Charges Tariff - Effective from 1st January 2026
TS LINES ...



We have taken into consideration a range of factors when setting the price to contribute to the volatile costs and have provided notification to the industry in line with the National Voluntary Guidelines. In ...



Per TEU Charges will be calculated as follows: A 20' will be charged as per the rates shown in the table. be charged 2 times the rate or the vessel voyage as published in the GST - All Tariffs are exclusive ...



Access the most popular content on our website.



ONE_Australia_Local_Charges_Tariff_ (Valid from 1 October 2025).pdf. import and export container detention free time during the Christmas and New Year period. the following days where ...



The Reference Tariff Schedule sets out the tariffs for Prescribed Services charged by Port of Melbourne to customers that have not negotiated and entered into a separate agreement with the Port of ...



SD \$100.00 per Bill of Lading Applied i. nt AUD \$130.00 per amendment Applied after Dr. er bill USD \$100.00 per bill Applied for cross-trade shipments when freight i. UD \$250.00 per Bill of Lading ...



Import containers are available free of storage charges for three working days (Free Storage Period). Import container remaining on the terminal beyond the Free Storage Period will be subject to the ...



Landside and ancillary charges remain well below half of Patrick's overall revenue. We still only partially recover our significant investment program and operational costs, with property and energy costs ...



SYSTEMATIC Port & Terminal Terminal handling (THC) at destination Terminal security (ISPS) at origin

Contact Us

For more information, pricing, or custom energy solutions, please contact us:

Website: <https://gdroofing.co.za>

Email: sales@gdroofing.co.za

Phone: +27 72 418 9365

Address: 22 Electron Avenue, Isando, Johannesburg, 1600, South Africa

This document is for informational purposes only. Specifications subject to change without notice.

