

Beyond Communication Distribution Box



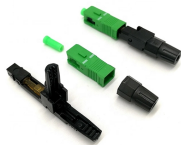
Beyond Communication Distribution Box



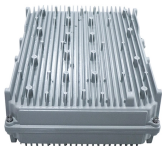
Fiber Optic Distribution Box, 12 Port Wall Mount Enclosure with 12 SC APC Adapters, Singlemode, FTTH, IP65 Waterproof Outdoor/Indoor Use - 9.45" x 8.66" x 2.56"



Some text some message..



We offer you more than 200 specifications in 10 categories, including fiber-optic distribution trays and splice closures, drop wire connectors, Cat5E and Cat6E patch cables, internet connectors, and ...



The BEYONDTECH FTTH Distribution Box comes pre-loaded with a Simplex SC/APC coupler and an SC/APC/SM G657A2 Simplex patch cord. Measuring 0.9mm in diameter and 1.5 meters in length, ...



Explore our diverse range of distribution boxes meticulously designed to meet the needs of indoor and outdoor environments. With weather-resistant materials and robust construction, our boxes ensure ...



For over a century, Beyond Distribution has provided tailored delivery and warehousing solutions for some of the nation's most recognized brands. Our team combines experience, innovation, and ...



This enclosure, when combined with our pre-terminated telecommunication home run cable, provides a communication wiring distribution point between the telecommunication closet and the end user ...



The BEYONDTECH FTTH Distribution Box comes pre-loaded with a Simplex ...



CommScope offers a complete line of easy-to-use access terminals, copper and fiber splice closures, patch closures and accessories to speed deployment.



We're excited to officially welcome you to the new Beyond Distribution website. Over the past several months, our team has been working behind the scenes to redesign and rebuild our ...



A communication distribution box is a vital component in modern telecommunications and network infrastructure, serving as a secure enclosure for managing, organizing, and protecting critical ...

Contact Us

For more information, pricing, or custom energy solutions, please contact us:

Website: <https://gdroofing.co.za>

Email: sales@gdroofing.co.za

Phone: +27 72 418 9365

Address: 22 Electron Avenue, Isando, Johannesburg, 1600, South Africa

This document is for informational purposes only. Specifications subject to change without notice.

