

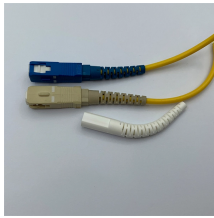
British Hot-Dip Galvanized Cable Tray Dimensions



Overview

Coupler plates fitted with captive nuts. Complies with BS EN 50085-2-1:2006 & BS EN 10346:2009. Four-way 3-compartment crossover/intersection for 150mm trunking. Provides a greater bend radius. Dimensions: 75mm x 75mm. HUFÉ CABLE TRAYS; USED WITH HM SERIES MODULES. This zinc coating is easily deformed. A cathodic action occurs on cut s leaned and roughened in order to achieve a good bond. After the dipping process, the surplus zinc is blown off and one obtains an extra passivating coat (an ultra-thin. TECHNOLOGIES Produce a complete range of cable trays as an engineered product, on a regular basis. 5012774330646 swifts-cable-tray-2015-014-015.

British Hot-Dip Galvanized Cable Tray Dimensions



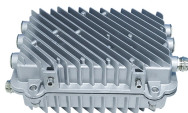
When fitting cable trays and their accessories, the products are cut on site to create changes of direction, adjust sections, etc. Damage can also occur during handling; as a result, both the ...



An added advantage of hot-dip galvanizing is that along the edges and pointy bits, where objects are usually extra susceptible to corrosion, the zinc coating is thicker because of the behaviour of the liquid.



Swifts Heavy Duty Hot Dip Galvanised Steel Cable Tray 90° Flat Bend 100mm x 50mm REF.
SRFB100G | EAN. 5012774330646



Cable Trunking: Four Way Intersection. Material: Galvanised Steel. Dimensions: 75mm x 75mm. Coupler plates fitted with captive nuts. Gusseted as standard. Complies with BS EN 50085-2-1:2006 ...



SRFL75G EAN. 5012774338482.



All fittings are available in sizes and types corresponding to the straight cable tray sections. Elbows - Horizontal and vertical elbows enable directional and elevational changes, ...



HCT CABLE TRAYS Hot-Dip Galvanized (TS EN ISO 1461) ... 040 HCT 100 T H Height (H)



Find out more about Hot Dipped Galvanised Medium Duty Cable Tray Lengths now! OBO - your provider for Medium Duty Cable Tray & Accessories.



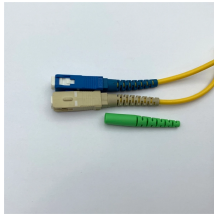
Our Cable Tray Systems and cable management trays offer high quality steel and galvanized steel solutions for the mechanical and electrical services industries.



STANDARD DIMENSIONS: Length (L): 2500mm, 3000mm. 00mm. Height (H): 50mm, 70mm, 1 Depth (D): 1.2mm, 1.5mm, 2.0mm.



The document provides a technical data sheet for cable trays including ladder and perforated types. It lists specifications for material, thickness, dimensions, loading capacity, fittings and accessories.



The document provides a technical data sheet for cable trays including ladder and ...



3m medium duty cable tray with a hot dip galvanised finish. A wide range of widths available from stock from 50 - 750mm for next day delivery.

Contact Us

For more information, pricing, or custom energy solutions, please contact us:

Website: <https://gdroofing.co.za>

Email: sales@gdroofing.co.za

Phone: +27 72 418 9365

Address: 22 Electron Avenue, Isando, Johannesburg, 1600, South Africa

This document is for informational purposes only. Specifications subject to change without notice.

