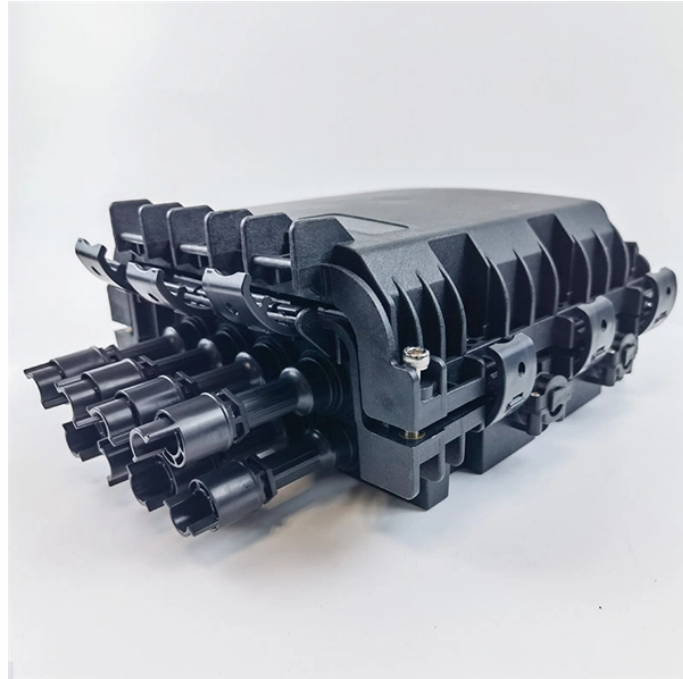
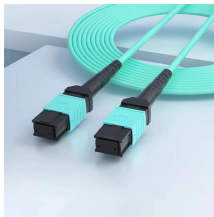


Cable 120 connected to distribution box



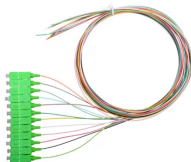
Cable 120 connected to distribution box



Inside Main Breaker Box
 How to Wire 120V Circuits & Breakers
 How to Wire 240V Circuits & Breakers
 Wiring Color Codes
 Safety Precautions
 The following tutorial shows how to wire 120V single phase breaker box installation in home. 120V single phase circuits are generally used in home wiring for lighting circuits and outlet receptacles. To do so, simply mount and connect a single pole (15A or 20A) circuit breaker to any of the hot busbar (out of hot 1 or hot 2) with the help of metal ...
 See more on electricaltechnology p>.news_dt{color:#767676}.wr_hlic,.wr_hli{margin-top:4px;color:#767676;display:block}.wr_hlic>.wr_hli,.wr_hli>*,.wr_hli li{display:inline}.wr_hli+.wr_hli::before{content:" | "}.wr_strike{text-decoration:line-through}NAFFA International, Inc.



The article discusses the wiring of typical 120-V branch circuits, focusing on receptacle outlets, switch outlets, and light outlets. It covers essential safety features, grounding requirements, and the ...



It is a Non-contact tester that I use to easily Detect Voltage in Cables, Cords, Circuit Breakers, Lighting Fixtures, Switches, Outlets and Wires. Simply insert the end of the tester into an outlet, lamp socket, ...



United Rentals is a leading provider of power distribution equipment for rent, featuring cables, transfer switches and power distribution boxes. Whether you're planning an event or managing backup power ...



It is connected to the "center tap" of the distribution transformer supplying the power. It is connected to the grounding conductor in only one place (often inside the panel). The neutral and ground should ...



A 120V wiring diagram serves as a blueprint, illustrating how electrical circuits are connected and how power flows through them. The 120V wiring diagram typically includes symbols and labels ...



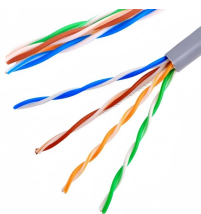
Here, you can see the wiring diagram where a 240V cum 120V Sub Panel is connected to a Main Panel. The sub-panel will distribute both 240V and 120V supplies. Here, we have used a ...



Explore a comprehensive guide to residential electric meter box wiring diagrams, offering clear instructions for safe and efficient installation.



These three wires enter the meter box and then connect to the main panel. In the following tutorial, we will show how to wire 120V single-phase and 240V split-phase circuit breakers and loads inside a ...



A 120V wiring diagram serves as a blueprint, illustrating how electrical circuits are connected and how power flows through them. The 120V wiring diagram typically ...



The neutral and ground wires for the circuit are connected to a bar along the side of the service panel box. The neutral and grounding bars in the panel may be separate or, in the case of older service ...



Wiring a main breaker panel means setting up the central hub that distributes electricity throughout a building. At the heart of the panel is the main breaker, a large switch that controls ...

Contact Us

For more information, pricing, or custom energy solutions, please contact us:

Website: <https://gdroofing.co.za>

Email: sales@gdroofing.co.za

Phone: +27 72 418 9365

Address: 22 Electron Avenue, Isando, Johannesburg, 1600, South Africa

This document is for informational purposes only. Specifications subject to change without notice.

