

GDR Telecom Site Energy Systems

Cable Inlet Tray



Cable Inlet Tray



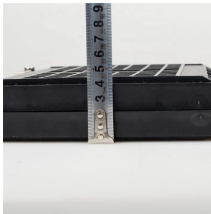
A cable tray system is used to support insulated electrical cables used for power distribution, control, and communication. Cable trays are used as an alternative to open wiring or electrical conduit ...



Cable Tray, 2" Depth x 4" Width x 10" Section, Material: Carbon Steel. Finish: Electroplated Zinc.



Channel cable tray secures cables using Eagle Basket pre-punched holes. New pre-punched holes allow the secure attachment of cables to the inside of the channel without the need to drill holes, ...



From heavy power cable pathways on oil drilling platforms to data center cabling, explore the cable tray that's strong yet easy to install. Fast installation with dependable support.



Streamline cable management with our cable trays and fittings. Browse our selection for reliable, durable options tailored to your project requirements.



These Cable Entry Systems offer the lowest total installed cost compared to traditional cable glands or cord grips, simplifying the installation and managing numerous cables in a very dense space. These ...



As a less-expensive alternative to conduit, a stronger alternative than wire basket, and superior to generic tray, Snap Track saves on labor and reduces total installed costs.



Explore cable tray systems and accessories for organized, accessible cable routing in commercial and industrial environments.



Choose from our selection of cable slots, including cable and hose trays, slotted wire duct, and more. Same and Next Day Delivery.



Choose from our selection of cable trays, including over 850 products in a wide range of styles and sizes. Same and Next Day Delivery.

Contact Us

For more information, pricing, or custom energy solutions, please contact us:

Website: <https://gdroofing.co.za>

Email: sales@gdroofing.co.za

Phone: +27 72 418 9365

Address: 22 Electron Avenue, Isando, Johannesburg, 1600, South Africa

This document is for informational purposes only. Specifications subject to change without notice.

