

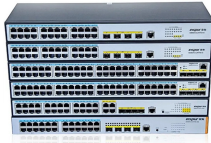
## Cable Management Requirements for Communication Equipment Rooms



## Cable Management Requirements for Communication Equipment Rooms



This section includes the specifications for constructing and building out of Telecommunications Equipment Rooms (MDF/IDFs) to be used for supporting telecommunications ...



This article presents a comprehensive framework for telecom room cable management, detailing the lifecycle from planning and implementation to maintenance, to achieve an organized, reliable, and ...



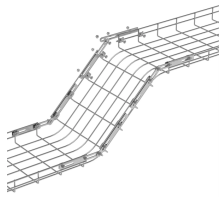
Application: Suitable for the support of termination apparatus, cable and cord management apparatus, network equipment, and other similar equipment, within a telecommunications room.



This section will cover all the requirements for physically constructing the room and locating it within the building that it services. In addition it will cover how to configure the room's layout to accommodate ...



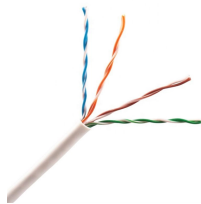
Adjust arrangements and locations of distribution frames, cross-connects, and patch panels in equipment rooms to accommodate and optimize arrangement and space requirements of telephone ...



This Section defines the general design requirements for a uniform Communications Room Infrastructure that shall be followed for all OFCC Technology construction projects.



All cable and equipment shall be installed in a neat and workmanlike manner. All methods of construction that are not specifically described or indicated in the contract documents shall be ...



Communications equipment room configurations and the structured cabling are to be installed following EIA/TIA standards. This document follows applicable BISC and EIA/TIA standards.



Provide overhead ladder tray along the perimeter of room and over the equipment rack row, and vertical cable managers (minimum 6" wide and 7-ft high) between equipment racks and each end of the ...



Coordinate layout and installation of communications equipment with Owner's telecommunications and LAN equipment and service suppliers. Coordinate service entrance ...

## Contact Us

For more information, pricing, or custom energy solutions, please contact us:

Website: <https://gdroofing.co.za>

Email: [sales@gdroofing.co.za](mailto:sales@gdroofing.co.za)

Phone: +27 72 418 9365

Address: 22 Electron Avenue, Isando, Johannesburg, 1600, South Africa

This document is for informational purposes only. Specifications subject to change without notice.

