

Cable enters and exits the distribution box from the bottom



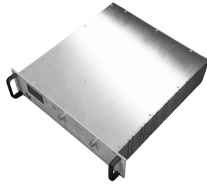
Overview

Use THHN/XHHW-2 for overhead or indoor service entrances in conduit. Article 230 of the National Electrical Code (NEC) explains the installation of service conductors and service equipment that brings electrical power from the utility supply to a building or structure. The scope of the article includes electrical requirements related to: Below is a complete overview. When installing insulated conductors of 4 AWG or larger, the minimum dimensions of pull or junction boxes installed in a raceway or cable run must comply with 314. The rules apply to “insulated” conductors for a reason. When installing large insulated conductors, care. There is a 10-2 (w/ground) UF cable which runs from my main panel in the basement, through the joists in the crawlspace, and exits the house here: Here's the outdoors side, where it connects to the disconnect (which is right out of view at the top of the picture): It doesn't look like whoever did. Labeling is equally important—perhaps more important—to identify the many cables converging on a panel box. Before you run each cable to the panel, use a permanent marker to write—right on the end of the Romex sheathing—which circuit the cable feeds: “Kitch A,” “Bath B,” “2d Flr Lights,” and so on. NEC Article 408 covers switchboards, switchgear, and

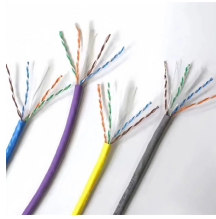
Panelboards installation and applications. All the circuits for my house panel come in from the bottom. Is it against code to have them enter from top & bottom?

Thanks Knock yourself out.

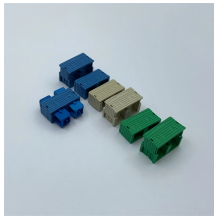
Cable enters and exits the distribution box from the bottom



SER and SEU cables are specifically service entrance conductors. They are used in above-ground residential applications to run from the meter to the main service panel. SER includes ...



The National Electrical Code (NEC) provides comprehensive safety standards for electrical installations, including requirements for electrical panels (main service panels and subpanels or breaker box).



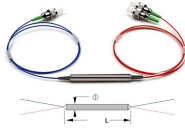
Main panels have designated lug locations, typically at the top or bottom. Feeding the service line near the lugs minimizes conductor length and improves safety.



At some point the cable needs to exit the wall cavity into the ...



Table 312.6 (A) applies where conductors do NOT enter or leave the enclosure through the wall opposite their terminals which describes the typical installation ...



The main advantage of bottom entry is that it maintains the integrity of the junction box against water. Rain and/or condensate in the conduit can destroy the wiring of a junction box in short ...

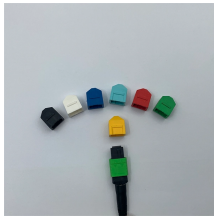
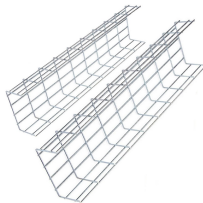


Table 312.6 (A) applies where conductors do NOT enter or leave the enclosure through the wall opposite their terminals which describes the typical installation where conductors enter the back of ...



Learn how to install a distribution box safely and correctly. Covers wiring, placement, standards, and expert tips for a compliant setup.



Option #1 and #2 - Sub-panel main lugs at top of panel. Service wire can enter from side of sub panel or bottom. (I'm not sure if option #2 would work because I need to bend the #4 copper ...



Often times cable which enters and exits from the bottom on the enclosure can put stress on the breaker terminals. The cables need to be supported in these cases.



Once you have pulled cables into the box and tightened cable connectors, strip Romex cable sheathing, leaving at least 1/4 in. of sheathing extending into the panel box.



At some point the cable needs to exit the wall cavity into the disconnect. But I'm unsure of what the common practice is for getting this wire from inside to outside.

Contact Us

For more information, pricing, or custom energy solutions, please contact us:

Website: <https://gdroofing.co.za>

Email: sales@gdroofing.co.za

Phone: +27 72 418 9365

Address: 22 Electron Avenue, Isando, Johannesburg, 1600, South Africa

This document is for informational purposes only. Specifications subject to change without notice.

