

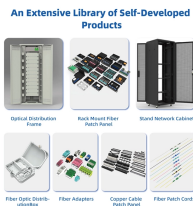
Cable tray 90-degree bend cutting plate



Cable tray 90-degree bend cutting plate



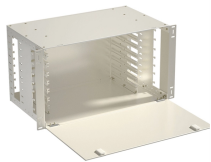
90-degree and tee bend kit. One kit contains hardware for one tee or two 90-degree bends. Slotted design fits any size tray and eliminates precise tray alignment.



Aluminum channel tray bend for cable support with solid or ventilated options. Includes splice plate for easy installation.



Splicing: Type - Basket Tray Tee or Bend Kit; Contents - 10 Bolts, 20 Connector Plates, 10 Nuts, 2 90deg Braces; Material - Steel; Finish - Black Paint; Application - Hardware Assembly for 1 Tee or 2 ...



Cable Tray Junction Kit, 90 Degree, Carbon Steel Cable Tray Fitting, 90° Junction Kit. Material: Carbon Steel. Finish: Electroplated Zinc. Includes: (1) Hardware for (1) Tee (2) 90° Bends.



Shop Cable Tray Fitting, 90° Horizontal Bend, Aluminum, 12 In Bend Radius, 1 Pair (Splice Plate) Pair By B-Line (Eaton) (ACC-04-90HB12) At Graybar, Your Trusted Resource For Cable Tray Fittings ...



This bend provides a 90° angle bend when connecting cable tray sections.



90°Radius Bends Wire Mesh Cable Tray L (90 degree) Junction Instructions CABLE TRAY CUTTING & BENDING GUIDES CONFIGURING CABLE TRAYS FOR INSTALLATION 90° Bends Assembled ...



The document provides instructions for the installation of 90° short radius bends for wire mesh cable trays in various widths (4", 6", and 12"). It lists the required accessory (NL8530012) for each width of ...



Creating a 90-degree elbow in an electrical cable tray, often called a "fabricated" or "mitered" bend, involves cutting, bending, and fastening a straight section of tray. The most common...



90-Deg Horizontal E-Bend Section (cULus Classified) is a cable runway for horizontal direction change. This 90-Degree Horizontal E-Bend Section (cULus), L90HB18BLK item fits 18.00in with a material of ...

Contact Us

For more information, pricing, or custom energy solutions, please contact us:

Website: <https://gdroofing.co.za>

Email: sales@gdroofing.co.za

Phone: +27 72 418 9365

Address: 22 Electron Avenue, Isando, Johannesburg, 1600, South Africa

This document is for informational purposes only. Specifications subject to change without notice.

