

# **Cable tray elevation measurement techniques**



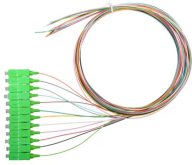
## Cable tray elevation measurement techniques



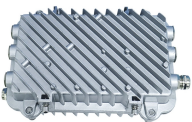
When fitting cable trays and their accessories, the products are cut on site to create changes of direction, adjust sections, etc. Damage can also occur during handling; as a result, both the ...



During construction or retrofitting, you will often encounter structural columns, HVAC ductwork, plumbing pipes, or elevation changes. An offset allows the tray to safely "step" over, under, or around these ...



The document discusses several key factors to consider when designing a cable tray system, including: 1) The width and height of the tray, type of tray bottom (ladder, ventilated, or solid), and type of ...



This publication is intended as a practical guide for the proper and safe\* installation of cable ladder systems, cable tray systems, channel support systems and associated supports.



Show fabrication and installation details of cable tray, including plans, elevations, and sections of components and attachments to other construction elements.



All tray items whether stored outside or indoors, should be placed on sufficient dunnage to enable future mechanical lifting. Trays and fittings should be stacked by their physical dimensions (width) and type. ...



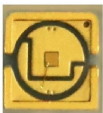
All the technical information developed by the 1973 NEC® Technical Subcommittee on Cable Tray for Article 318 - Cable Trays was based on cable trays with side rails and this technical information is still ...



Designer shall provide a 12" vertical working clearance above the cable tray with no continuous obstructions. In addition, a 12" space must be provided on either side for working access.



Some applications may require the cable tray to support the weight of a single, dead object in addition to the cable loads. Specifications typically require this to be applied at the midpoint of the span between ...



Cable tray length is selected based on the load to be supported, the distance between the supports (also referred to as the span), and handling and installation constraints.



Cable trays are widely used in electrical installations to manage cables and reduce space requirements. However, as buildings grow taller and urban areas become more densely populated, ...

## Contact Us

For more information, pricing, or custom energy solutions, please contact us:

Website: <https://gdroofing.co.za>

Email: [sales@gdroofing.co.za](mailto:sales@gdroofing.co.za)

Phone: +27 72 418 9365

Address: 22 Electron Avenue, Isando, Johannesburg, 1600, South Africa

This document is for informational purposes only. Specifications subject to change without notice.

