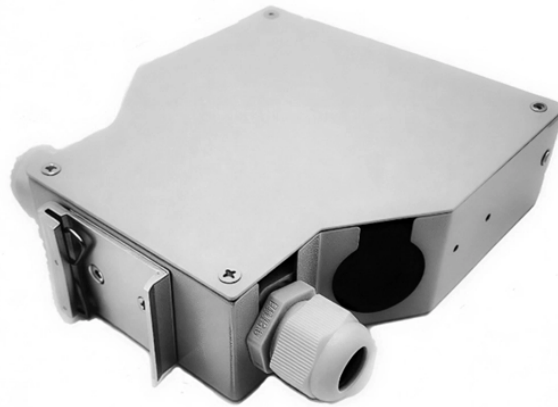


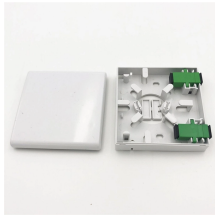
## Cable tray fittings processing



## Cable tray fittings processing



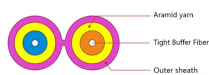
Some applications may require the cable tray to support the weight of a single, dead object in addition to the cable loads. Specifications typically require this to be applied at the midpoint of the span between ...



Start designing with cable trays by Chalfant Manufacturing today! Find out more about our products and systems for a wide range of applications.



We fabricate Solid-Bottom Tray, Cable Channel or Trough Trays and Ventilated Trays. We also fabricate all of the fittings and transition pieces compatible for ...



Explore the cable tray manufacturing process, types of cable trays, and important factors. Learn how it all works in an easy-to-understand guide.



As a less-expensive alternative to conduit, and a stronger alternative than wire basket, and superior to generic tray, the Snap Track cable tray system saves on labor and reduces total installed costs.



We fabricate Solid-Bottom Tray, Cable Channel or Trough Trays and Ventilated Trays. We also fabricate all of the fittings and transition pieces compatible for each tray.



Compare solid, perforated and ladder trays, choose materials & finishes, and match fittings plus accessories for complete installations. Request drawings & a quote.



Explore the one-stop shop for innovative, fast, and dependable cable management systems including wire mesh tray, ladder cable tray, prefab assemblies, fasteners, and assemblies.



Eaton's submittal builder tool for B-Line series cable ladder and tray allows you to easily filter, select and download straight section, fitting and accessory submittals.



Cable tray length is selected based on the load to be supported, the distance between the supports (also referred to as the span), and handling and installation constraints.



Learn more about the different cable trays and fittings used in cable systems and how Selco Manufacturing can help you find the right products for your project requirements.

## Contact Us

For more information, pricing, or custom energy solutions, please contact us:

Website: <https://gdroofing.co.za>

Email: [sales@gdroofing.co.za](mailto:sales@gdroofing.co.za)

Phone: +27 72 418 9365

Address: 22 Electron Avenue, Isando, Johannesburg, 1600, South Africa

This document is for informational purposes only. Specifications subject to change without notice.

