

GDR Telecom Site Energy Systems

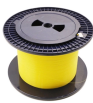
Cable tray label 10050



Cable tray label 10050



Code Change Summary: New marking requirements were added for cable trays. When cable trays contain conductors rated over 600 volts they are required to be marked “DANGER — HIGH ...



Type 100, 200 & Cable Tray offered in a premium, high-tack adhesive vinyl designed for the application of permanent interior or exterior signage. Semi-rigid material is ...



This premium quality, flexible, opaque solid color, high gloss, thin, vinyl film is designed for use on cable tray, piping, architectural, transportation, and general signage.



Find durable, customizable cable tray identification labels with UV resistance, flame retardant material, and RFID traceability. Click to explore top-rated suppliers and secure your project ...



Specification sheet for Cablofil CF105 wire mesh cable trays with 4-inch side rails. Features tray sizes of 750mm and 900mm, detailed dimensions, finishes, and compliance with ...



Labels, manufacture Electrical identification Labels for Cable Trays, Trunking, Raceways, and Conduits are essential for ensuring safety and efficiency in electrical management.



The MEI Vinyl Cable Tray Labels are manufactured to order and available in various background / text colour combinations and sizes up to a maximum of 5,000mm x 1,250mm.



Wire and cable labels are extremely important for keeping your wires, ethernet, voice and data lines organized and running effectively. They will help you quickly identify the right voice lines during ...



It is designed for mechanical support and strain relief in long runs of cable and creates a smooth gradual bend for cable. Rail and stringer material is 16 ga steel tubing.



Choose from our selection of cable labels, including adhesive-back wire markers, slip-on wire markers, and more. Same and Next Day Delivery.

Contact Us

For more information, pricing, or custom energy solutions, please contact us:

Website: <https://gdroofing.co.za>

Email: sales@gdroofing.co.za

Phone: +27 72 418 9365

Address: 22 Electron Avenue, Isando, Johannesburg, 1600, South Africa

This document is for informational purposes only. Specifications subject to change without notice.

