

## Cable trays aren't that complicated



### Overview

Cable trays come in various types, including ladder, solid bottom, wire mesh, and trough designs, each suited to different environments and cable management needs. They allow for easy access to the cables for maintenance, modification, or upgrades, making them a popular choice. Cable trays support insulated electrical cables in industrial and commercial settings. They serve as an alternative to traditional conduit systems, offering increased flexibility and ease of installation.



## Cable trays aren't that complicated



Discover the top 7 types of cable trays including Ladder, Perforated, and Wire Mesh. Learn their applications and benefits for efficient cable management.



Types of Cable Trays and Sizes Explore various cable tray types and sizes for electrical installations. Learn about ladder, perforated, solid-bottom, wire mesh, and channel trays in this complete guide.



A cable tray is an organized support structure designed to secure and route these insulated electrical cables. It acts as a dedicated pathway for power distribution and data transmission, often supporting ...



Discover over 100 expert answers about cable trays, covering key topics like material selection, load capacity, installation methods, and maintenance.



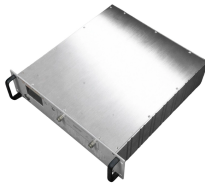
Learn how to choose the best cable tray system for your needs. Explore types, materials, installation tips, and NEC compliance in this expert guide.



Selecting the correct cable tray type is not arbitrary—it depends on a combination of cable characteristics, environmental conditions, and installation requirements.



This article will explore the different types of cable trays, the materials used, and their benefits in a wide range of applications. Understanding these elements is key to optimizing both the performance and ...



Discover the essential guide to cable tray systems. Learn about ladder, trough, and wire mesh types, key components, and expert installation tips ...



Cable trays are components of support systems for power and communications cables and wires. A cable tray system supports and protects both power and signal cables and facilitates upgrading, ...



Explore all types of cable trays—ladder, perforated, basket, solid, and channel. Learn their uses, materials, pros, cons, and key differences.



**Purpose**  
**Types of Cable Trays**  
Ladder Cable Tray  
Perforated Cable Tray  
Channel Cable Tray  
**Materials**  
**Advantages**  
**Disadvantages**  
Cable trays are components of support systems for power and communications cables and wires. A cable tray system supports and protects both power and signal cables and facilitates upgrading, expanding, reconfiguring, or relocating networks. Most of the cable tray systems are open, allowing efficient heat dissipation and easy access for replacement ...See more on [advanxis electrical](#)



Learn how to choose the best cable tray system for your needs. Explore types, materials, installation tips, and NEC compliance in this expert guide.



Discover the essential guide to cable tray systems. Learn about ladder, trough, and wire mesh types, key components, and expert installation tips for safe and organized cable management.

## Contact Us

For more information, pricing, or custom energy solutions, please contact us:

Website: <https://gdroofing.co.za>

Email: [sales@gdroofing.co.za](mailto:sales@gdroofing.co.za)

Phone: +27 72 418 9365

Address: 22 Electron Avenue, Isando, Johannesburg, 1600, South Africa

This document is for informational purposes only. Specifications subject to change without notice.

