

## Cables are run through cable trays first then through conduits



### Overview

The pathway is the plan, the trays and conduits are the buckets which contain the wires. Conduits: These are. Tray cables (TC, TC-ER, and similar types) are specially designed for use in cable tray systems, which support multiple runs of cable across industrial and commercial buildings. It ensures that all installation activities follow authorized plans, specifications, and standards. They have openness, and therefore, everything is easily seen. Effective cable tray and conduit system planning is essential for both new installations and retrofit projects. When integrated with IEC standards, planning becomes more reliable and. The two most common methods to transition from a cable tray to the equipment are: Cables or conductors leaving the cable tray and entering the equipment through a raceway with a bushing on the end (see image A).

## Cables are run through cable trays first then through conduits



Cable trays and conduits serve different yet complementary purposes. Trays support large numbers of power and control cables, while conduits offer mechanical protection, especially in ...



Step-by-step cable tray and conduit installation method with safety, quality and inspection procedures as per IEEE standards.



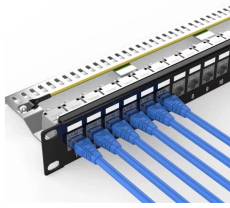
Learn best practices for cable routing, cable management, and choosing the right cable pathways, trays, and conduits for efficient data center setups.



The two most common methods to transition from a cable tray to the equipment are: Cables or conductors leaving the cable tray and entering the equipment through a raceway with a bushing on ...



Tray cables are fundamentally designed for use in cable trays rather than conduit. However, conduit becomes necessary when cables are underground and not direct-burial rated, in ...



Learn best practices for cable routing, cable management, and choosing the right cable pathways, trays, and conduits for efficient data center ...



Just like with cable tray, it's important to properly size conduit and limit conduit fill. The size of the conduit is based on the planned diameter of the cable and the maximum pull tension that ...



That is, cable trays are infrastructure used to support and convey electrical cables - which are not enclosed, in the manner of conduit. By contrast, ...



That is, cable trays are infrastructure used to support and convey electrical cables - which are not enclosed, in the manner of conduit. By contrast, the NEC defines a conduit as a ...



Discover the main types of cable containment systems—trays, trunking, and conduits—and learn how to choose the right solution for safe, compliant installations.



Master the differences between cable pathways, conduits, trays, and pits. This strategic guide helps you choose the right infrastructure to ensure long-term network reliability and performance.



This guide covers the cable tray types and their appropriate applications, the fill rules for each configuration, ampacity derating requirements, separation of power and signal cables, and the ...

## Contact Us

For more information, pricing, or custom energy solutions, please contact us:

Website: <https://gdroofing.co.za>

Email: [sales@gdroofing.co.za](mailto:sales@gdroofing.co.za)

Phone: +27 72 418 9365

Address: 22 Electron Avenue, Isando, Johannesburg, 1600, South Africa

This document is for informational purposes only. Specifications subject to change without notice.

