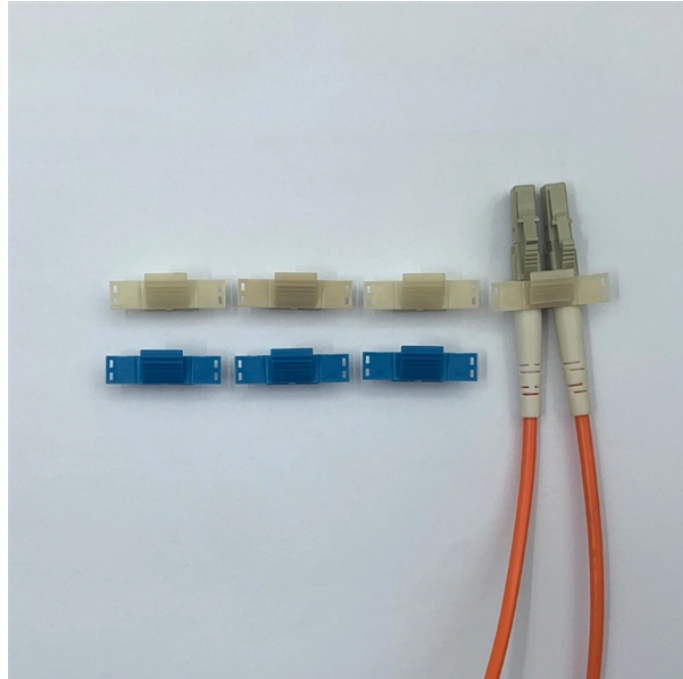


Can a beam splitter be added to a surveillance line



Overview

For example, a 10:90 (RT) beam splitter will provide you with a reflected beam with 10% of the source intensity and 90% of the source intensity will be in the transmitted beam. Similarly, you can have any possible ratio, although the most common off-the-shelf ratios are: 10:90. □□ For purchasing, use the RP Photonics Buyer's Guide for beam splitters. It provides an expert-curated supplier directory, buyer-focused technical background information, and structured selection criteria to support professional procurement decisions. What are Beam Splitters?

A beam splitter (or. Beamsplitters are optical components used to split incident light at a designated ratio into two separate beams. Newport offers a wide variety of Beamsplitters in various shapes.

Can a beam splitter be added to a surveillance line



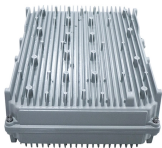
While most beam splitters have only two output ports, there are also beam splitters with multiple outputs. They may be realized, for example, based on diffractive optics.



They are devices that split an incident light beam into several light beams at certain splitting ratios. The role of these splitters in optical networks is crucial as they allow a single optical signal to be shared ...



These cube beam splitters have no beam shift and can be easily integrated with 0-degree angle of incidence. The reflected and transmitted optical path lengths are equal, and compared to other ...



Therefore, the reallocation technique of optical signal can be achieved in multiple fibers, which is how fiber splitter comes into being. Specifically speaking, the passive optical splitter can ...



It is possible to design a beam splitter whose split beams don't have equal amount of light intensity. For example, a 10:90 (RT) beam splitter will provide you with a reflected beam with 10% of ...



Options range from laser beam combiners designed for specific laser wavelengths to broadband hot and cold mirrors for splitting visible and infrared light. This type of beamsplitter is commonly used in ...



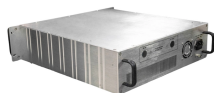
They are devices that split an incident light beam into several light beams at certain splitting ratios. The role of these splitters in optical networks is crucial as they ...



As mentioned previously, beamsplitters can split incoming light into many streams. The splitting process is contingent on the incoming light's wavelength, intensity, or polarity, as well as the ...



These are rugged beamsplitters that are easy to mount and are ideal for beam superposition applications. This type of beamsplitter deforms much less when subjected to mechanical stress than ...



Newport offers both broadband and laser line cube beamsplitters. These beamsplitters are made from high grade glass materials with laser grade surface flatness and surface quality and have a tighter ...



One unpolarized beam passing through a circularly polarizing beam splitter will split and propagate with left-handed CP (LCP) in one direction, and right-handed CP (RCP) in the other. The split beams ...

Contact Us

For more information, pricing, or custom energy solutions, please contact us:

Website: <https://gdroofing.co.za>

Email: sales@gdroofing.co.za

Phone: +27 72 418 9365

Address: 22 Electron Avenue, Isando, Johannesburg, 1600, South Africa

This document is for informational purposes only. Specifications subject to change without notice.

