

Can cable trays be laid completely



Overview

Due to their exposure to the open air because of the cable trays, the wires contained within need a very durable outer covering. The regulations dictate that the cables must either be Type TC (also known as Tray Rated) or must be metal-armored (Type MC). This guide covers the cable tray types and their appropriate applications, the fill rules for each configuration, ampacity derating requirements, separation of power and signal cables, and the decision criteria for choosing cable tray over conduit. A rung spacing of 6 to 9 inches (150 to 230 mm) is preferable when. NEC Article 392 outlines the key rules for installing and maintaining industrial cable tray systems. Here's what you need to know: Cable Types: Only use. Cable tray systems provide a safe, organized, and flexible method for supporting insulated conductors and cables in commercial and industrial electrical installations. NEC section 300-8 does not permit.

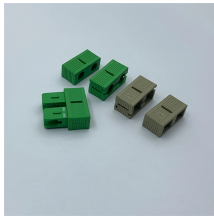
Can cable trays be laid completely



Question 1: Can mechanical utility piping or tubing containing water or compressed air be installed in cable trays with electrical cables? Answer: No. Cable trays are a support system for electrical cables, ...



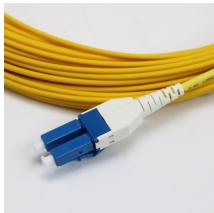
Can Power and Control Cables Share the Same Tray? Yes, if properly separated and compliant with voltage classification rules. How Full Can a Cable Tray Be? Fill limits vary, but ...



Cable tray length is selected based on the load to be supported, the distance between the supports (also referred to as the span), and handling and installation constraints.



Master NEC Article 392 with our comprehensive guide. Learn essential cable tray requirements for installation, grounding, and fill capacity to ensure full electrical compliance.



This guide covers the critical steps, from selecting the right electrical cable tray and performing accurate cable fill calculations to managing a safe cable pull through and ensuring all bonding and grounding ...



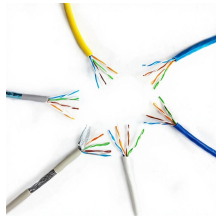
This guide covers the cable tray types and their appropriate applications, the fill rules for each configuration, ampacity derating requirements, separation of power and signal cables, and the ...



This article explains the main requirements and good practices for cable tray systems, including tray types, materials, loading, supports, bonding, cable selection, and installation details.



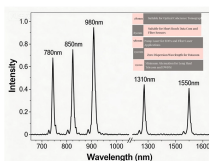
Despite their versatility, cable trays are not suitable for every situation. They are strictly prohibited in hoistways or any location where they could face severe physical damage. Cable trays ...



Discover over 100 expert answers about cable trays, covering key topics like material selection, load capacity, installation methods, and maintenance.



In-depth guide to cable trays, focusing on NEC Article 392. Covers types, selection, installation, and safety standards for electrical systems.



Our wind certification report provides you with list of acceptable B-Line series cable tray supports, fittings and covers based off of the environmental conditions, cable loading, and type of cable tray in your ...

Contact Us

For more information, pricing, or custom energy solutions, please contact us:

Website: <https://gdroofing.co.za>

Email: sales@gdroofing.co.za

Phone: +27 72 418 9365

Address: 22 Electron Avenue, Isando, Johannesburg, 1600, South Africa

This document is for informational purposes only. Specifications subject to change without notice.

