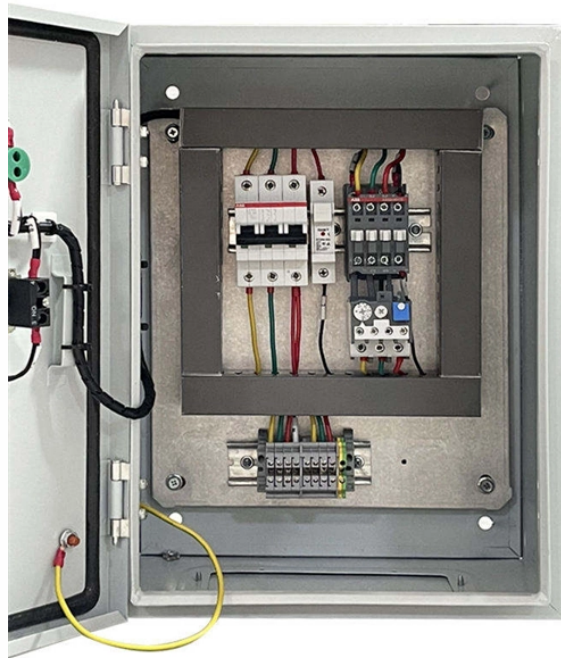


Can cable trays be surface-mounted



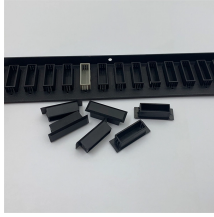
Overview

Surface-Mounted Fixing: For floor-level installations, cable trays can be mounted directly onto surfaces using brackets or clips. Is your cable tray system optimized for safety, dependability, space and cost savings?

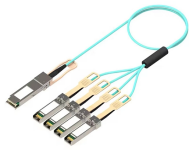
Cable tray (or cable ladder) systems are a popular alternative to electrical conduit systems, as they have an outstanding record for dependable service, design flexibility and cost savings in commercial and. en completely installed, without damage either to conductors or structural system use maintain spacing or to keep cables in place when the tray is ect the minimum bend radius for cables as they exit the bottom of the cable tray. A rung spacing of 6 to 9 inches (150 to 230 mm) is preferable when. Several mounting options are available for wire mesh basket trays and cable trays, improving safety, ease of maintenance, and overall effectiveness. Wire mesh basket trays are an excellent option for a flexible and efficient cable management system. When mounting these trays, consider the following. Hubbell's NEXTFRAME® Ladder Tray is the effective and widely used cable runway that supports and delivers bundles of cable between cabinets, racks, and closets, along walls, and

suspended from ceilings. The Ladder Tray features light, rugged, tubular steel construction. It is designed for. us-trations without notice.

Can cable trays be surface-mounted



Our hand-bendable cable trays have built in mounting rings that attach to any surface at any angle without struts or trapezes. The prefabricated 801 Series Mega Snake system hangs from a ...



Surface-Mounted Fixing: For floor-level installations, cable trays can be mounted directly onto surfaces using brackets or clips. This setup is commonly used for industrial areas where cables ...



Cable trays are permitted for use in any type of building or structure, provided they comply with the relevant installation and support requirements outlined in NEC Article 392.



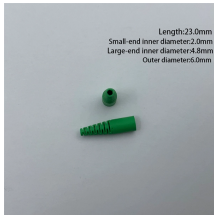
Installation: Cable trunkings are usually surface-mounted and can be clipped or screwed onto walls or skirting boards. They are simpler to install than ...



There are various types, including surface-mounted, flush-mounted, and underground pathways, each suited to different installation needs. In this blog post, we discuss two types of cable pathways: ...



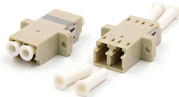
It should not be permanently enclosed in the building's structure or finishes. Cable tray must be installed on the surface, mounted on a surface or installed behind panels



Our wind certification report provides you with list of acceptable B-Line series cable tray supports, fittings and covers based off of the environmental conditions, cable loading, and type of cable tray in your ...



Question 1: Can mechanical utility piping or tubing containing water or compressed air be installed in cable trays with electrical cables? Answer: No. Cable trays are a support system for electrical cables, ...



When fitting cable trays and their accessories, the products are cut on site to create changes of direction, adjust sections, etc. Damage can also occur during handling; as a result, both the ...



A solid bottom cable tray features a fully enclosed bottom surface with continuous side rails, and no ventilation openings. Some designs include optional solid or ventilated covers for added ...



Hubbell's NEXTFRAME® Ladder Tray is the effective and widely used cable runway that supports and delivers bundles of cable between cabinets, racks, and closets, along walls, and suspended from ...

Contact Us

For more information, pricing, or custom energy solutions, please contact us:

Website: <https://gdroofing.co.za>

Email: sales@gdroofing.co.za

Phone: +27 72 418 9365

Address: 22 Electron Avenue, Isando, Johannesburg, 1600, South Africa

This document is for informational purposes only. Specifications subject to change without notice.

