

## Can optical modules be used together



### Overview

Q: Can two optical modules from different brands/suppliers be connected to each other?

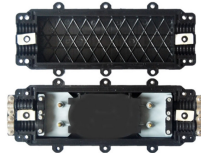
A: If the wavelength, speed, and fiber type of the module are the same and operate normally on the original switch, two different brands of optical modules can be interconnected. 1, Same wavelength In a fiber optic link, data is transmitted from one end to the other, and the optical module is responsible. XFP Optical Modules and SFP+ Optical Modules play a crucial role in modern fiber-optic networks. Although higher-speed technologies such as 25G, 40G, 100G, and even 400G Ethernet continue to evolve, 10G solutions remain widely deployed due to their balance of performance, cost, and reliability. In today's data center and high-speed network deployments, 100G optical modules have become a critical infrastructure supporting high bandwidth, low latency, and high reliability. Dual fiber modules use two fibers. They are easier to set up and give steady communication. The compatibility of optical modules involves many aspects, including physical interfaces.

## Can optical modules be used together

 <p>8-Port PLC Fiber Splitter Box 12-Port SC Fiber Splitter Box Size: 280*120*50mm Material: ABS, PA66</p>	<p>Dual fiber modules use two fibers. They are easier to set up and give steady communication. Single-mode optical modules are best for long distances ...</p>
	<p>Yes, but certain compatibility conditions must be met. In most cases, a 1Gbps SFP module can be plugged into a 10Gbps SFP+ port and operate at 1Gbps. However, the reverse is ...</p>
	<p>Q: Can 1G SFP optical modules and 10G SFP+ optical modules be used simultaneously? A: Under the premise that they all share the same specifications (such as speed and wavelength) and choose the ...</p>
	<p>Correct pairing of the two optical wavelengths is essential for proper BiDi link operation. Not only do BiDi modules offer stringent and specific ...</p>
	<p>Optical transceiver modules of different brands can be interconnected as long as the standards are the same. The optical transceiver module follows the corresponding agreement during design and ...</p>



Correct pairing of the two optical wavelengths is essential for proper BiDi link operation. Not only do BiDi modules offer stringent and specific wavelength accuracy, but they also meet ...



Dual fiber modules use two fibers. They are easier to set up and give steady communication. Single-mode optical modules are best for long distances and fast speeds. They use ...



Learn how to connect SFP and SFP+ modules together. Discover compatibility requirements, speed limitations, and configuration tips for success.



Optical modules are encapsulated in different modes to provide different structures. Huawei S series devices support optical modules of the following encapsulation types: CFP, QSFP+, QSFP28, XFP, ...

An Extensive Library of Self-Developed Products



Generally speaking, optical modules of your own brand can only be used on your own equipment, and optical modules of other brands cannot be matched with your own equipment.



Generally speaking, optical modules of your own brand can only be used on your own equipment, and optical modules of other brands cannot be ...



Although XFP Optical Modules and SFP+ Optical Modules are not physically interchangeable, they can coexist in the same Ethernet network. For example, a 10G XFP module ...



This article will analyze the relationship between them from technical specifications, optical characteristics, and application scenarios, and provide practical solutions.

## Contact Us

For more information, pricing, or custom energy solutions, please contact us:

Website: <https://gdroofing.co.za>

Email: [sales@gdroofing.co.za](mailto:sales@gdroofing.co.za)

Phone: +27 72 418 9365

Address: 22 Electron Avenue, Isando, Johannesburg, 1600, South Africa

This document is for informational purposes only. Specifications subject to change without notice.

