

Carbon frame internal wiring front gear switch



Carbon frame internal wiring front gear switch



The front derailleur cable will exit into a tubular stainless steel cable stop. These are 7 mm in diameter with a 4 mm bore, so are a nice firm fit for the gear cable. They are sold by Ceeway ...



There isn't a cable, hose or electrical wire in sight. The trend for integrated routing sees any gear cables and hydraulic hoses ...



Fitting a gear cable should be a relatively simple task for most experienced bike mechanics. However, fitting an internally routed inner and outer cable can be a big challenge, ...



Our carbon frames and (full) carbon forks are approved for a maximum rider and bike weight of 115 kg.



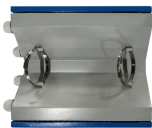
Known as internal cable routing, this feature is helping to create some of the cleanest looking rigs ever, and it also reduces wind drag significantly according to the gurus that run Specialized's Win Tunnel.



Last time I had to replace a gear cable, it was just trial and error moving the cable around that got me there in the end, but it took a while - I ended up just using gravity and tilting the frame in ...



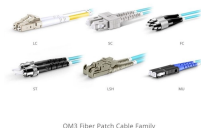
There isn't a cable, hose or electrical wire in sight. The trend for integrated routing sees any gear cables and hydraulic hoses concealed at the front end. The result? A clean aesthetic and...



I'm in the process of purchasing a new OEM-built titanium frame from Wittson, and I would appreciate some guidance regarding fully integrated cable routing for a Rohloff Speedhub setup ...



I am currently in the process of making a custom carbon mountain bike frame. I have the front triangle mold done and am working on the rear triangle molds. The front triangle will have ...



My front derailleur and my rear brake cable are laid through the bottom bracket. I rode my bike around 150 miles since I laid the cables through the BB, without any problems.



Hi, I am having difficulty finding a proper answer to a couple of questions I have regarding internal cable routing through a carbon bike frame. Every video I have looked at, with one ...

Contact Us

For more information, pricing, or custom energy solutions, please contact us:

Website: <https://gdroofing.co.za>

Email: sales@gdroofing.co.za

Phone: +27 72 418 9365

Address: 22 Electron Avenue, Isando, Johannesburg, 1600, South Africa

This document is for informational purposes only. Specifications subject to change without notice.

