

GDR Telecom Site Energy Systems

Chad Optical Cable Fittings



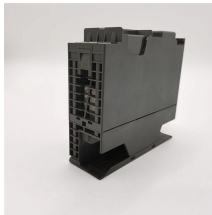
Chad Optical Cable Fittings



Historical Data and Forecast of Chad Optic Fiber Cable & Accessories Market Revenues & Volume By Wavelength Division Multiplexing (WDM) for the Period 2021-2031



Built for fiber optic professionals, it offers fast splicing speeds and advanced capabilities, ensuring a smooth and consistent performance even in demanding conditions.



Our analysts track relevant industries related to the Chad Fiber Optical Cable and Cable Assembly Products Market, allowing our clients with actionable intelligence and reliable forecasts tailored to ...



Our Fiber Optic Cable End Fittings are compatible with ACMI, Storz, Pilling, Olympus, and Designs for Vision systems.



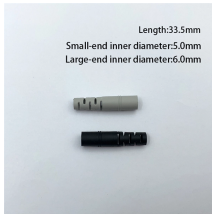
Download printable guides and spec sheets for useful tools in your practice.



6Wresearch actively monitors the Chad Fiber Optic Cable Accessories Market and publishes its comprehensive annual report, highlighting emerging trends, growth drivers, revenue analysis, and ...



A pair of wedges grips the cable automatically within the conical body. The installation does not require any specific tools and the operating time is drastically reduced.



We provide advanced optical technology and vision solutions for ophthalmic professionals.



From single mode to multimode, and specialized cables like armored and hermetically sealed options, learn how each type of fiber optic cable is designed ...



From single mode to multimode, and specialized cables like armored and hermetically sealed options, learn how each type of fiber optic cable is designed to meet specific performance and installation ...



Opticlarity has experience with supplying the majority of Silicon Valley based blue ribbon datacenters and most USA based telecom and cable operators. Installers leverage the Opticlarity cable & box ...

Contact Us

For more information, pricing, or custom energy solutions, please contact us:

Website: <https://gdroofing.co.za>

Email: sales@gdroofing.co.za

Phone: +27 72 418 9365

Address: 22 Electron Avenue, Isando, Johannesburg, 1600, South Africa

This document is for informational purposes only. Specifications subject to change without notice.

