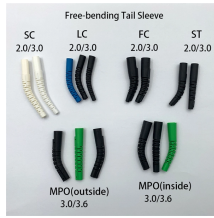


## Check the electrical labeling on the distribution box



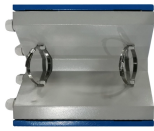
## Check the electrical labeling on the distribution box



This is the only reliable way to understand the system and correctly approach how to label electrical panel in a residential setup. It removes guesswork and makes breaker box labeling ...



Learn how to read a circuit breaker panel and decode the labeling to understand the functions of each component in a circuit breaker panel.



Understand your distribution box labels to identify circuits, improve safety, and troubleshoot electrical issues in your home with confidence.



Stand on a dry, insulated surface. Use a flashlight if power is out. If unsure about labeling or wiring, consult a licensed electrician.



That big gray box in your utility room may seem like a mystery, but with a little know-how, you can learn how to read and operate it. Your breaker panel controls the electrical distribution ...



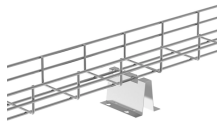
Accurate identification and labeling of circuits within your breaker box is crucial for electrical safety and maintenance. Understanding circuit breaker numbers and creating a directory ...



A comprehensive guide to electrical panel labeling, including safety tips, code compliance, and effective labeling practices. Learn how to protect your family and improve maintenance efficiency.



In this comprehensive guide, you'll learn why labeling matters, how to do it thoroughly and correctly, which tools and materials to use, and best practices for keeping your electrical system ...



Inside this metal box, you'll find a series of switches, each controlling a different part of your home's power. Knowing how to read these switches, specifically their labels, is essential for any ...



The essential guide to reading your breaker box. Understand safety protocols, interpret circuit labels, and manage your home's power system.

## Contact Us

For more information, pricing, or custom energy solutions, please contact us:

Website: <https://gdroofing.co.za>

Email: [sales@gdroofing.co.za](mailto:sales@gdroofing.co.za)

Phone: +27 72 418 9365

Address: 22 Electron Avenue, Isando, Johannesburg, 1600, South Africa

This document is for informational purposes only. Specifications subject to change without notice.

