

Common Wavelength Division Multiplexing and Demultiplexing Devices

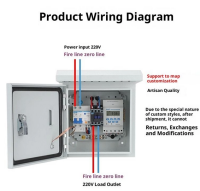


Overview

Normal WDM (sometimes called BWDM) uses the two normal wavelengths 1310 and 1550 nm on one fiber. Dense WDM (DWDM) uses the C-Band (1530 nm-1565 nm) transmission window but with denser. In fiber-optic communications, wavelength-division multiplexing (WDM) is a technology which multiplexes a number of optical carrier signals onto a single optical fiber by using different wavelengths (i. This technique enables bidirectional communications over a. □□ For purchasing, use the RP Photonics Buyer's Guide for wavelength division multiplexing. It provides an expert-curated supplier directory, buyer-focused technical background information, and structured selection criteria to support professional procurement decisions. It can perform additional roles like providing redundancy, supporting advanced topologies, reducing hardware and cost, etc. This collection encompasses a variety of research papers, conference proceedings, and technical articles that explore both foundational. Internet and Data Networks: Multiplexing is used in internet communications to transmit data from multiple users over a single

network line, improving the efficiency and speed of data transfer. Satellite Communications: Multiplexing helps in efficiently utilizing the available bandwidth on.

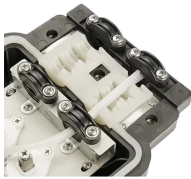
Common Wavelength Division Multiplexing and Demultiplexing Devices



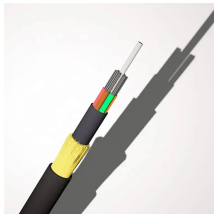
It details the two main standards: coarse WDM (CWDM), with few channels and wide spacing for applications like metropolitan networks, and dense WDM (DWDM), which uses many narrowly ...



A number of different technologies have been developed for multiplexing and demultiplexing multiple wavelengths, but the principle is illustrated by a prism, as shown in Figure 27.



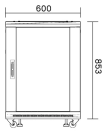
Wavelength Division Multiplexing (WDM) is a multiplexing technology used to increase the capacity of optical fiber by transmitting multiple optical signals simultaneously over a single ...



Key topics include the principles of wavelength multiplexing and demultiplexing, the design and optimization of WDM systems, and innovative modulation techniques that enhance data transmission ...



The chapter introduces the concept of optical multiplexing with special focus on wavelength division multiplexing. Other multiplexing methods are also briefly described highlighting ...



Each multiplexing technology, whether CWDM, DWDM, FWDM, MWDM, or LWDM, presents distinct advantages and limitations. The choice depends on factors such as distance ...



Optical receivers, in contrast to laser sources, tend to be wideband devices. Therefore, the demultiplexer must provide the wavelength selectivity of the receiver in the WDM system. WDM systems are ...



The maximum number of devices allowed is dependent on the form factor of the module/cassette, the connector type chosen, and the number of services being combined.



The subject of transmitting signals at different wavelengths along a single optical fibre is called wavelength division multiplexing or WDM. By using a different, and ideally well defined, wavelength ...



The bandwidth properties of optical fiber are well known and make it the media of choice for high-speed data and video applications. However, various forms of multiplexing are required to take advantage ...

Contact Us

For more information, pricing, or custom energy solutions, please contact us:

Website: <https://gdroofing.co.za>

Email: sales@gdroofing.co.za

Phone: +27 72 418 9365

Address: 22 Electron Avenue, Isando, Johannesburg, 1600, South Africa

This document is for informational purposes only. Specifications subject to change without notice.

