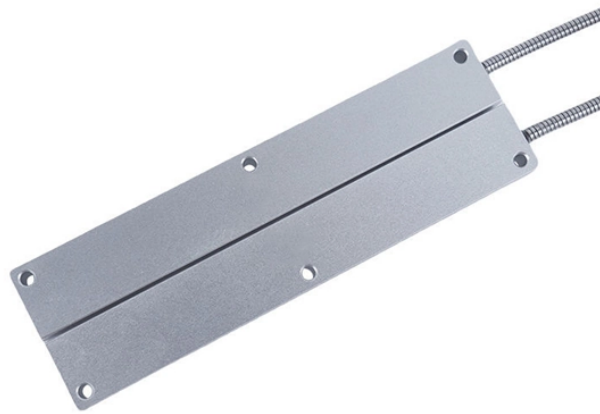


Conductor T-junction at construction site



Conductor T-junction at construction site



On construction sites, a box, conduit body, or other enclosure isn't required for either of the following: The circuit conductors are from nonmetallic multiconductor cord or cable assemblies, provided that ...



All 120-volt cord sets (extension cords) shall have an equipment grounding conductor which shall be connect-ed to the grounding contacts of the connector(s) on each end of the cord.



On a construction site, receptacles are not permitted on a branch circuit that supplies temporary lighting [590.4 (D) (1)]. This requirement is necessary so illumination is maintained, even when the ...



One of the most important aspects of the installation is the overcurrent protective device (circuit breaker) and GFCI protection, which is often incorporated into the device.



This guide explains everything you need to know about T connectors: what they are, where they are used, how to choose the right one, how to install them properly, and which product ...



Metal raceways, cable armor, and other metal enclosures for conductors shall be metallicity joined together into a continuous electric conductor and shall be so connected to all boxes, fittings, and ...



Only qualified persons familiar with the construction and operation of temporary electrical power systems should perform the work described in this publication.



It is common on tract home construction sites to ignore this requirement. Since the Code inspector presumably will visit only when the wiring is nearly done and a permanent service has been installed ...



Conductors expand and contract with changes in temperature (they are longest at high temperatures), so they need to be installed at the proper tension such that they do not sag too low when ...



If a touch-safe pigtail such as snap-in switches and receptacles are to be used, the new language will allow a box containing live conductors spliced to a finger-safe device to go without a cover plate ...

Contact Us

For more information, pricing, or custom energy solutions, please contact us:

Website: <https://gdroofing.co.za>

Email: sales@gdroofing.co.za

Phone: +27 72 418 9365

Address: 22 Electron Avenue, Isando, Johannesburg, 1600, South Africa

This document is for informational purposes only. Specifications subject to change without notice.

