

# Configuration of Core Switch for Leased Line Access



## Overview

Before you add an on-premises machine to an ACK Edge cluster, you must configure network elements on top of infrastructure resources. This topic describes how to configure network elements when you add an on-premises machine in a data center to an ACK Edge cluster in a virtual. This chapter describes how to configure channelized E1 and channelized T1 for ISDN PRI and for two types of signaling to support analog calls over digital lines. Requirement 4: IPsec VPN needs to be deployed so that different sites can communicate with each other. Requirement 5: User online behavior. Below is a block diagram illustrating a typical leased line network architecture connecting two branch offices (Branch A and Branch B) to the internet through an ISP network. In this diagram, Branch A and Branch B Represent two geographically separated branch offices. Simply put, it's the kingpin that keeps your network humming. You may also want to. Quality of Service (QoS): Quality of Service (QoS) is essential in core switches.

## Configuration of Core Switch for Leased Line Access



Prompt Explanation switch-Stack(eth-x/y)# Stack(eth-x/y) indicates the interface context of config, in the form (eth-<member-in-stack>/<interface>). For example:  
switch(eth-1/48)# Chapter 2 Time Protocols ...



Setting up a leased-line link involves configuring the peer at one end of a switched or unswitched service that is leased from a provider. This section includes the following information:



In carrier networks, Layer 3 switches may be used at metro edge nodes, enterprise leased-line access points, and service aggregation positions. They provide flexible VLAN isolation, policy ...



Unlike access switches, which connect directly to end-user devices, the core switch focuses on aggregating and routing traffic between other switches, minimizing latency and ...



For configuration information about this leased line or nondial use, see the "Configuring Serial Interfaces" chapter in the Cisco IOS Interface Configuration Guide.



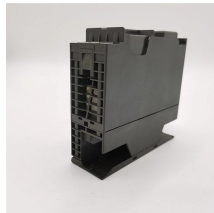
Add interfaces for connecting the access switches and core switch to VLANs. The following uses the interface connecting access switch 2 and the core switch as an example.



The user will register all TDM/DSN voice switches (e.g., PBX1, NE-SHOUTS, Switch Multiplex Unit, and Inverse Multiplexer (IMUX)) that connect via a tandem/nodal connection to the Multifunction Switch ...



What is a Core Switch? A core switch is the primary switch installed at the backbone of a layered or hierarchical network. These data switches are responsible for routing and data switching at the core ...



Below is a block diagram illustrating a typical leased line network architecture connecting two branch offices (Branch A and Branch B) to the internet through an ISP network.



Before you add an on-premises machine to an ACK Edge cluster, you must configure network elements on top of infrastructure resources. This topic describes how to configure network elements when you ...

## Contact Us

For more information, pricing, or custom energy solutions, please contact us:

Website: <https://gdroofing.co.za>

Email: [sales@gdroofing.co.za](mailto:sales@gdroofing.co.za)

Phone: +27 72 418 9365

Address: 22 Electron Avenue, Isando, Johannesburg, 1600, South Africa

This document is for informational purposes only. Specifications subject to change without notice.

