

## Configuration of power distribution box for hanging basket construction



## Configuration of power distribution box for hanging basket construction



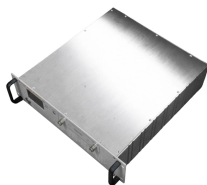
In this paper according to the Hanging Basket structure form and mechanical characteristics, spatial truss finite element model is established, the analysis model of the whole stress and the stability of ...



The Distribution Construction Standards Handbook defines our distribution construction standard for both HV and LV of the overhead & underground energy system.



General Technical Particulars for LT Distribution Boxes : - The L.T. Distribution Boxes should be of the dimensions as per the drawing & details in the table furnished.



DRESS THE MAJORITY OF CONSTRUCTION ISSUES. IT IS IMPERATIVE TO MAINTAIN STANDARDIZATION, AND THAT COMPLETED JOB ORDERS REFLECT ANY CHANGES ON THE ...



The Wire Basket Overhead Cable Tray Routing System is composed of pathways, splices, mounting brackets, and accessories that allow the system to be configured for a wide range of applications and ...



The ABB-MNS® distribution board and power cabinet are of a welded structure. The product comes in a good variety of shapes, and is highly versatile, structurally innovative, and mechanically rigid. Its ...



Learn how to install a distribution box safely and correctly. Covers wiring, placement, standards, and expert tips for a compliant setup.



Construction panel, bag model, with impact-resistant plastic housing. Can also be placed on the wall. Equipped with 1 416-6 intake, 4 Schuko outlets with 13A fusing, and 2 416-6 outlets.



The purpose of this guide is to ensure the Vault used for housing Oncor Electric Delivery Network and Distribution equipment are designed to allow Oncor to safely operate its equipment and ensure the ...



Open-mounted distribution box installation method: Assemble four bolts into the four holes on the corners and tighten them into the expansion pipes to fix the box.

## Contact Us

For more information, pricing, or custom energy solutions, please contact us:

Website: <https://gdroofing.co.za>

Email: [sales@gdroofing.co.za](mailto:sales@gdroofing.co.za)

Phone: +27 72 418 9365

Address: 22 Electron Avenue, Isando, Johannesburg, 1600, South Africa

This document is for informational purposes only. Specifications subject to change without notice.

