

Configuration requirements for power distribution boxes for single equipment



Configuration requirements for power distribution boxes for single



Electro Centers or Integrated Power Assemblies (IPA) can be fitted out with a variety of electrical distribution equipment and shipped to the site in preassembled modules for mounting on elevated ...



A temporary power distribution box (TPDB), often called a spider box, functions as a portable electrical hub that centralizes and protects power distribution on a job site. This device ...



MINI X-TREME BOX™ 20 AMP TO 50 AMP TEMPORARY POWER DISTRIBUTION UNITS WITH GFCI PROTECTION 6532UGM1 II size models. Used along with our restoration adapters, these ...



The building electrical power distribution systems shall be designed so that a high level of reliability and ease of operation is provided, as well as facilitating preventative maintenance while minimizing the ...



The guidance provided in this document enables informed decision-making, resulting in reliable, efficient, and scalable power distribution solutions tailored to specific operational requirements.



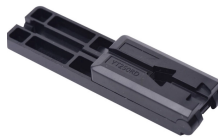
The National Electrical Code (NEC) outlines and defines the requirements for the permanent and temporary power distribution equipment installation for live entertainment.



NEC Article 314 establishes requirements for the installation and use of electrical boxes, conduit bodies, fittings, and handhole enclosures.



Each has its own unique standards and application guidelines, and one facet of good power system design is the knowledge of when to apply each type of equipment and the limitations of each type of ...



Design requirements for low voltage distribution boxes cover NEC, IEC, and safety standards to ensure reliable, compliant electrical installations.



From residential 100-amp panels to massive 600 amp main distribution panels in commercial facilities, this comprehensive guide will help you understand distribution board types, ...

Contact Us

For more information, pricing, or custom energy solutions, please contact us:

Website: <https://gdroofing.co.za>

Email: sales@gdroofing.co.za

Phone: +27 72 418 9365

Address: 22 Electron Avenue, Isando, Johannesburg, 1600, South Africa

This document is for informational purposes only. Specifications subject to change without notice.

