

Connect the fiber optic line s network port to the router



Overview

You can't directly connect a fiber optic cable to your router. You need an intermediary device. Compatible router: Verify that your router supports fiber optic input (look for an SFP or WAN port labeled). The fiber optic cable does not plug directly into a standard home router because the signal type must be translated. The fiber line terminates at the Optical Network Terminal (ONT), which is typically supplied and installed by the internet service provider.



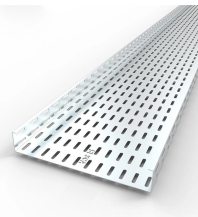
Connect the fiber optic line s network port to the router



Step 1: Connect the fiber cable from the ISP into the designated port on the ONT. Step 2: Connect an Ethernet cable from the ONT's Ethernet port to your router's WAN port.



Configuring your router for fiber internet ensures you get the most out of your high-speed connection. By following these detailed steps, you will enjoy faster, more reliable, and secure internet ...



Connect fiber internet correctly. Learn the essential hardware bridge and sequential steps needed to link the optical line to your router.



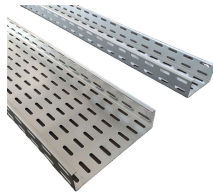
Connecting a fiber optic cable to a router involves a few key steps and specialized equipment. Here's a simple guide to help you through the process: 1. Check Your Fiber Optic ...



By following this detailed guide, you've not only learned how to connect fiber optic cable to router properly but also how to optimize and maintain that connection for peak performance.



However, setting up a fiber optic connection to your router can seem daunting if you're unfamiliar with the process. In this guide, we'll walk you through how to connect a fiber...



Learn how to connect fiber optic cable to router with our step-by-step guide. Optimize your home network for speed and reliability!



Connect the fiber optic cable to the router: Carefully insert the end of the fiber optic cable into the corresponding port on the router. Make sure the connection is tight to avoid connection ...



Build a home fiber network for 1-2 Gbps speeds with this complete guide to installation, troubleshooting, and performance.



Connecting a fiber optic cable to a router might seem daunting at first, but with the right tools and a bit of patience, it's a straightforward process. Here's a step-by-step guide to help you through it.

Contact Us

For more information, pricing, or custom energy solutions, please contact us:

Website: <https://gdroofing.co.za>

Email: sales@gdroofing.co.za

Phone: +27 72 418 9365

Address: 22 Electron Avenue, Isando, Johannesburg, 1600, South Africa

This document is for informational purposes only. Specifications subject to change without notice.

