

Connecting multiple fiber optic switches



Connecting multiple fiber optic switches



SFP transceiver modules are specific to the type of fiber being connected (either single mode or multimode). Choose an SFP module based on the fiber optic cabling that will be connected to the ...



If you want to achieve the highest speed and distance in the cabling between two or more switches, without a doubt, the best option is the fiber optic connection and using the SFP or SFP + ...



Most modern fiber-enabled network switches require an SFP transceiver module featuring a duplex (two strand) multimode OM3 or duplex single mode OS2 connection with LC connectors. Direct attach ...



One way to inter connect AB and BC segments is by fusing a pair of required fiber cores. Another way is to put a switch at Location B and interconnect using SFP modules.



Multimode fiber optic switches have emerged as a crucial component, enabling seamless connectivity and efficient data transmission. In this comprehensive guide, we will delve into the operation and ...



Can two switches with fiber ports be directly connected through fiber ports? The answer is yes. The mainline of the fiber optic LAN directly connects to the switch, then to the router. The connection ...



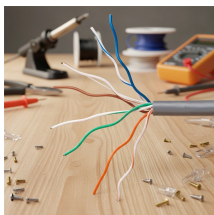
In this step-by-step guide, we'll show you how to build a high-speed fiber optic network using 2 fiber switches. ...more



To connect multiple Ethernet switches, the best way is to use a multi-strand fiber cable. The 4-strand pre-terminated fiber optic cable consists of four individual strands or fibers of glass or ...



I need to connect 4 Floor Building with 4 Cisco 2960 - 48 ports switch each other and it needs to be through a fiber. So all PCs connected to each switch would reach the LAN/WAN from ...



In this video, we'll delve into the world of fiber optics, exploring the reasons behind their necessity, introducing Fiber Switches and Fiber PoE Switches, guiding you through the...

Contact Us

For more information, pricing, or custom energy solutions, please contact us:

Website: <https://gdroofing.co.za>

Email: sales@gdroofing.co.za

Phone: +27 72 418 9365

Address: 22 Electron Avenue, Isando, Johannesburg, 1600, South Africa

This document is for informational purposes only. Specifications subject to change without notice.

